


Market Operations Report

A faint background map of the state of New York is overlaid with a network of colored lines representing a power grid. The lines are primarily red and blue, with some green lines. Small circular nodes are placed at various points along the lines, representing substations or power plants. The map is centered behind the main title.

Rana Mukerji

*Senior Vice President, Market Structures
New York Independent System Operator*

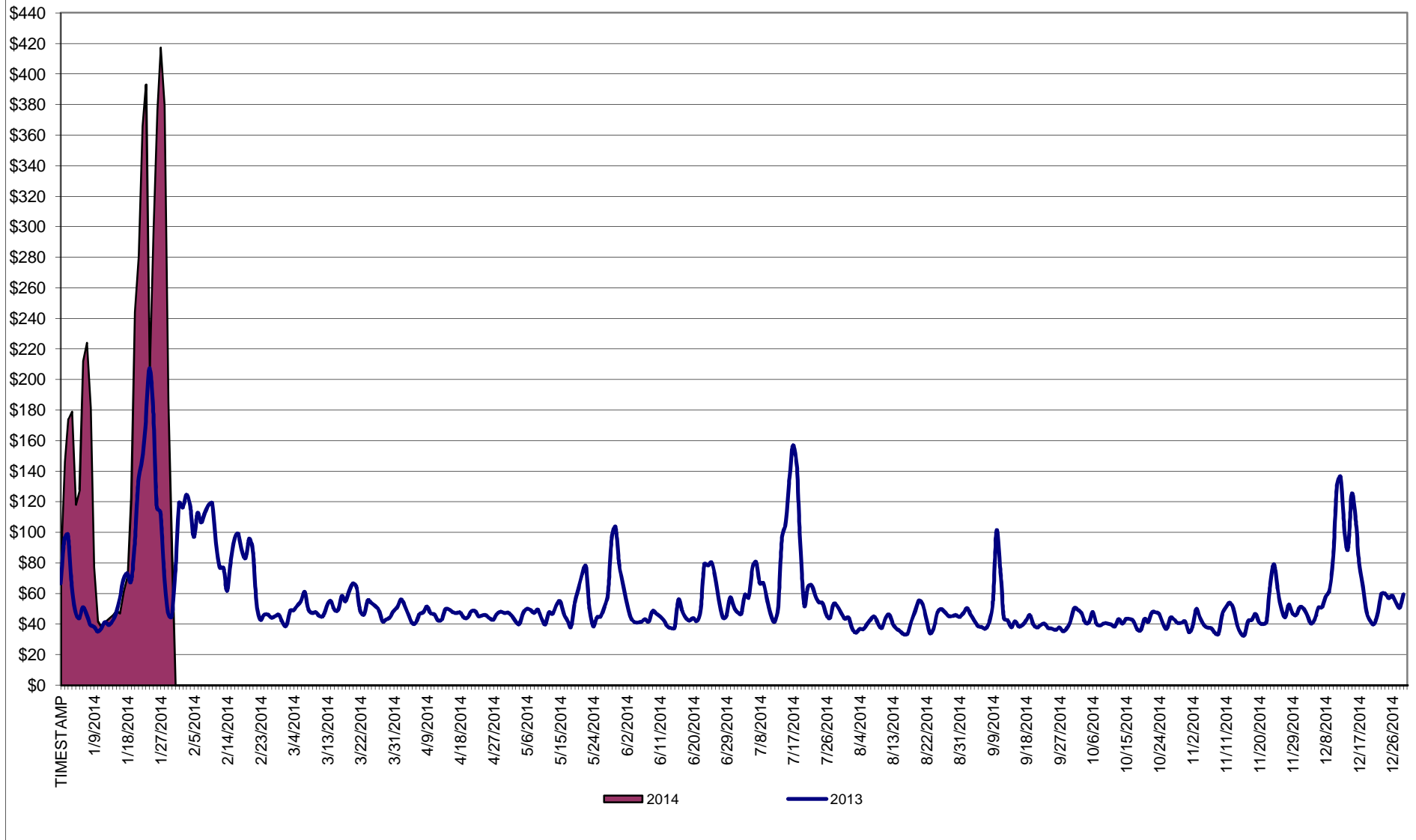
Business Issues Committee Meeting

February 12, 2014

Market Performance Highlights for January 2014

- **LBMP for January is \$183.25/MWh; 176% higher than \$66.39/MWh in December 2013 and 130% higher than \$79.77/MWh in January 2013.**
 - Day Ahead and Real Time Load Weighted LBMPs are ~170% higher compared to December.
 - **January 2014 average year-to-date monthly cost of \$185.55/MWh is a 125% increase from \$82.34/MWh in January 2013.**
 - **Average daily sendout is 475 GWh/day in January; higher than 450 GWh/day in December 2013 and 453 GWh/day in January 2013.**
 - **Natural gas prices were higher compared to the previous month, and distillate prices were mixed compared to the previous month.**
 - Natural Gas (Transco Z6 NY) was \$27.43/MMBtu, up 394% from \$5.55/MMBtu in December.
 - Jet Kerosene Gulf Coast was \$21.65/MMBtu, down from \$21.93/MMBtu in December.
 - Ultra Low Sulfur No.2 Diesel NY Harbor was \$22.26/MMBtu, up from \$21.80/MMBtu in December.
 - **Uplift* per MWh is lower compared to the previous month.**
 - Uplift (not including NYISO cost of operations) is (\$0.36)/MWh; lower than (\$0.25)/MWh in December.
 - The Local Reliability Share is \$1.38/MWh, higher than \$0.12 in December.
 - The Statewide Share is (\$1.73)/MWh, lower than (\$0.37)/MWh in December.
 - TSA \$ per NYC MWh is \$0.00/MWh.
 - Total uplift costs (Schedule 1 components including NYISO Cost of Operations) are lower than December.
- * Does not include the cost of uplift that may result from the NYISO's January 22, 2014 Petition for Temporary Tariff Waivers (See FERC Docket No. ER14-1138).

Daily NYISO Average Cost/MWh (Energy & Ancillary Services)*
 2013 Annual Average \$59.13/MWh
 January 2013 YTD Average \$82.34/MWh
 January 2014 YTD Average \$185.55/MWh



* Excludes ICAP payments.

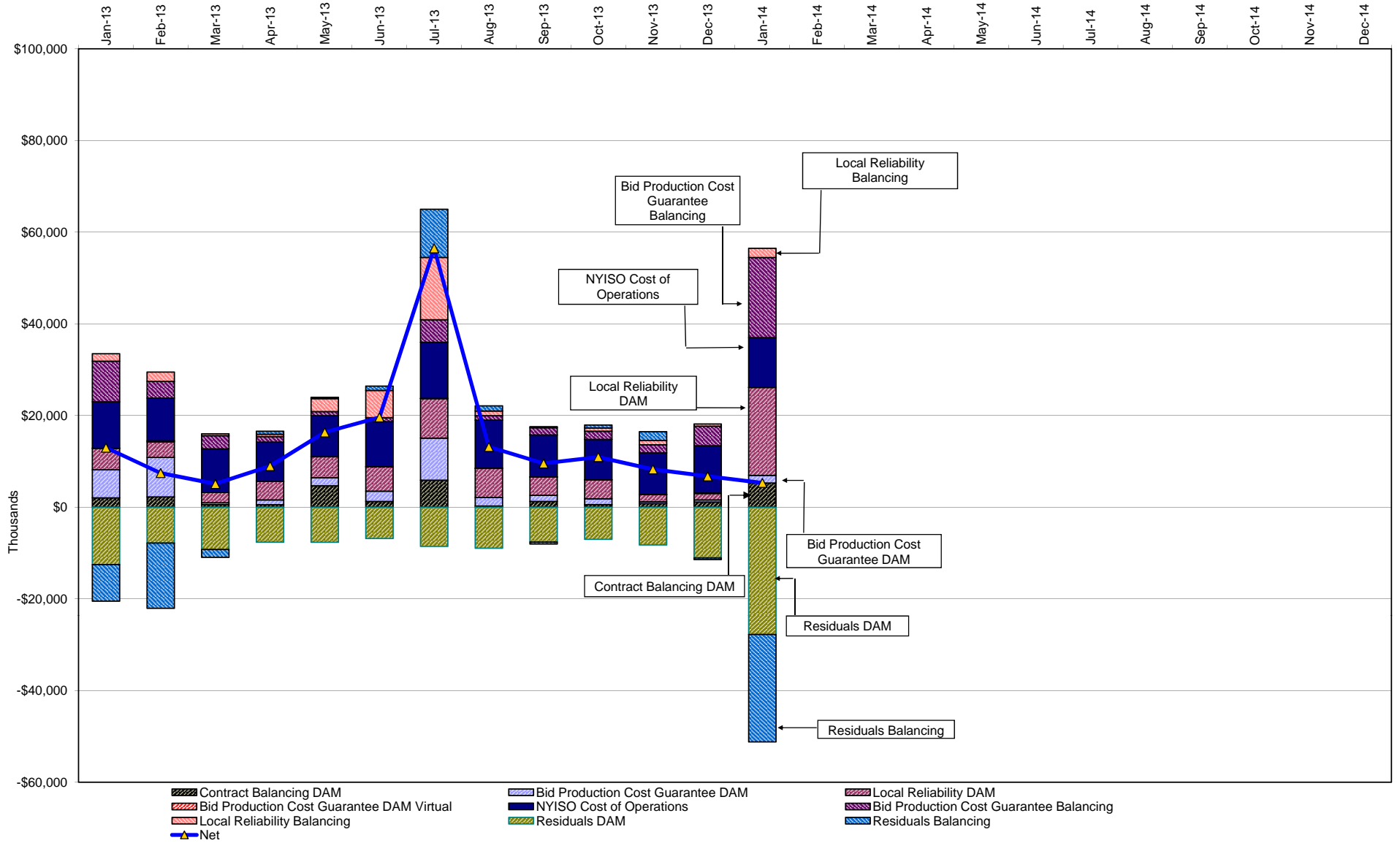
NYISO Average Cost/MWh (Energy and Ancillary Services) *
from the LBMP Customer point of view

2014	<u>January</u>	<u>February</u>	<u>March</u>	<u>April</u>	<u>May</u>	<u>June</u>	<u>July</u>	<u>August</u>	<u>September</u>	<u>October</u>	<u>November</u>	<u>December</u>
LBMP	183.25											
NTAC	0.56											
Reserve	0.78											
Regulation	0.27											
NYISO Cost of Operations	0.69											
Uplift	(0.36)											
Uplift: Local Reliability Share	1.38											
Uplift: Statewide Share	(1.73)											
Voltage Support and Black Start	0.36											
Avg Monthly Cost	185.55											
Avg YTD Cost	185.55											
TSA \$ per NYC MWh	0.00											
2013	<u>January</u>	<u>February</u>	<u>March</u>	<u>April</u>	<u>May</u>	<u>June</u>	<u>July</u>	<u>August</u>	<u>September</u>	<u>October</u>	<u>November</u>	<u>December</u>
LBMP	79.77	85.76	48.94	44.47	52.21	50.17	68.49	40.81	44.24	39.83	43.27	66.39
NTAC	0.79	0.83	0.76	0.90	0.85	0.86	0.66	0.28	0.57	0.91	1.08	0.59
Reserve	0.38	0.44	0.43	0.36	0.49	0.34	0.50	0.32	0.38	0.42	0.38	0.44
Regulation	0.13	0.13	0.10	0.11	0.09	0.13	0.11	0.13	0.13	0.16	0.13	0.12
NYISO Cost of Operations	0.69	0.69	0.69	0.69	0.69	0.69	0.69	0.69	0.69	0.69	0.69	0.69
Uplift	0.21	(0.15)	(0.33)	0.02	0.41	0.49	2.07	0.03	(0.04)	0.16	(0.06)	(0.25)
Uplift: Local Reliability Share	0.44	0.40	0.19	0.37	0.58	0.81	1.27	0.49	0.31	0.38	0.19	0.12
Uplift: Statewide Share	(0.23)	(0.55)	(0.52)	(0.35)	(0.17)	(0.31)	0.80	(0.46)	(0.36)	(0.21)	(0.25)	(0.37)
Voltage Support and Black Start	0.36	0.36	0.36	0.36	0.36	0.36	0.36	0.36	0.36	0.36	0.36	0.36
Avg Monthly Cost	82.34	88.06	50.96	46.91	55.10	53.05	72.88	42.62	46.32	42.55	45.86	68.34
Avg YTD Cost	82.34	85.08	74.02	67.80	65.46	63.36	65.10	62.27	60.74	59.30	58.23	59.13
TSA \$ per NYC MWh	0.00	0.00	0.00	0.04	0.58	0.61	1.52	0.43	0.22	0.01	0.00	0.00
2012	<u>January</u>	<u>February</u>	<u>March</u>	<u>April</u>	<u>May</u>	<u>June</u>	<u>July</u>	<u>August</u>	<u>September</u>	<u>October</u>	<u>November</u>	<u>December</u>
LBMP	44.00	32.45	28.98	28.31	34.68	47.37	63.80	46.24	39.59	39.30	50.16	44.67
NTAC	0.85	0.80	0.68	0.71	0.72	0.77	0.58	0.65	0.57	0.70	0.75	0.83
Reserve	0.35	0.25	0.38	0.32	0.13	0.36	0.36	0.22	0.23	0.29	0.40	0.26
Regulation	0.10	0.08	0.13	0.12	0.09	0.15	0.15	0.12	0.09	0.10	0.11	0.09
NYISO Cost of Operations	0.64	0.64	0.64	0.64	0.64	0.64	0.64	0.64	0.64	0.64	0.64	0.64
Uplift	0.44	0.17	0.00	(0.18)	(0.11)	0.61	0.23	0.22	(0.33)	1.04	0.82	(0.11)
Uplift: Local Reliability Share	0.49	0.27	0.19	0.07	0.25	0.42	0.49	0.83	0.26	0.67	0.72	0.30
Uplift: Statewide Share	(0.05)	(0.10)	(0.19)	(0.25)	(0.36)	0.19	(0.26)	(0.61)	(0.59)	0.38	0.11	(0.41)
Voltage Support and Black Start	0.37	0.37	0.37	0.37	0.37	0.37	0.37	0.37	0.37	0.37	0.37	0.37
Avg Monthly Cost	46.75	34.75	31.19	30.29	36.52	50.27	66.14	48.46	41.17	42.44	53.26	46.74
Avg YTD Cost	46.75	41.12	37.96	36.09	36.18	38.89	44.26	44.91	44.51	44.33	45.14	45.28
TSA \$ per NYC MWh	0.00	0.00	0.00	0.00	1.52	0.45	0.85	0.46	0.59	0.00	0.00	0.00

* Excludes ICAP payments.
Market Mitigation and Analysis
Prepared: 2/7/2014 8:28 AM

Data reflects true-ups thru Sept 2013.

NYISO Dollar Flows - Uplift- OATT Schedule 1 components - Data through January 31, 2014



DAM Contract Balancing amounts are for payments made to generating units to make them whole for being dispatched below their Day-Ahead schedule, as a result of out-of-merit dispatches.

DAM Bid Production Cost Guarantees for Virtual Transactions are included in the chart and are shown from the inception of Virtual Transactions. These values are small and cannot be identified on the chart.

DAM residuals consist of both energy and loss revenue collections and payments. By design, there is a net over collection of revenues due to the difference between the marginal losses paid to generation and the average losses charged to loads.

NYISO Markets Transactions

2014	January	February	March	April	May	June	July	August	September	October	November	December
Day Ahead Market MWh	16,034,264											
DAM LSE Internal LBMP Energy Sales	52%											
DAM External TC LBMP Energy Sales	5%											
DAM Bilateral - Internal Bilaterals	36%											
DAM Bilateral - Import/Non-LBMP Market Bilaterals	5%											
DAM Bilateral - Export/Non-LBMP Market Bilaterals	2%											
DAM Bilateral - Wheel Through Bilaterals	1%											
Balancing Energy Market MWh	-240,397											
Balancing Energy LSE Internal LBMP Energy Sales	-237%											
Balancing Energy External TC LBMP Energy Sales	109%											
Balancing Energy Bilateral - Internal Bilaterals	21%											
Balancing Energy Bilateral - Import/Non-LBMP Market Bilaterals	0%											
Balancing Energy Bilateral - Export/Non-LBMP Market Bilaterals	11%											
Balancing Energy Bilateral - Wheel Through Bilaterals	-5%											
Transactions Summary												
LBMP	56%											
Internal Bilaterals	37%											
Import Bilaterals	5%											
Export Bilaterals	2%											
Wheels Through	1%											
Market Share of Total Load												
Day Ahead Market	101.5%											
Balancing Energy +	-1.5%											
Total MWh	15,793,868											
Average Daily Energy Sendout/Month GWh	475											

2013	January	February	March	April	May	June	July	August	September	October	November	December
Day Ahead Market MWh	15,140,096	14,116,189	14,250,091	12,963,905	13,451,310	14,872,971	17,974,314	16,090,437	14,021,472	13,411,499	13,692,854	15,406,816
DAM LSE Internal LBMP Energy Sales	56%	55%	56%	57%	56%	57%	59%	57%	55%	51%	52%	52%
DAM External TC LBMP Energy Sales	4%	6%	3%	3%	1%	1%	1%	0%	0%	0%	3%	6%
DAM Bilateral - Internal Bilaterals	38%	37%	38%	37%	37%	36%	33%	36%	38%	41%	40%	36%
DAM Bilateral - Import/Non-LBMP Market Bilaterals	0%	0%	0%	0%	3%	4%	5%	5%	4%	5%	4%	4%
DAM Bilateral - Export/Non-LBMP Market Bilaterals	1%	1%	1%	1%	1%	1%	1%	1%	1%	1%	2%	1%
DAM Bilateral - Wheel Through Bilaterals	1%	1%	1%	1%	1%	1%	1%	1%	1%	1%	1%	1%
Balancing Energy Market MWh	-471,167	-648,574	-501,253	-525,278	-501,948	-669,315	-294,946	-915,232	-759,051	-682,567	-573,122	-528,397
Balancing Energy LSE Internal LBMP Energy Sales	-131%	-117%	-127%	-123%	-133%	-115%	-189%	-113%	-120%	-123%	-134%	-131%
Balancing Energy External TC LBMP Energy Sales	33%	20%	23%	21%	35%	16%	78%	9%	11%	14%	23%	16%
Balancing Energy Bilateral - Internal Bilaterals	4%	10%	11%	3%	5%	4%	11%	3%	6%	6%	4%	13%
Balancing Energy Bilateral - Import/Non-LBMP Market Bilaterals	0%	0%	0%	0%	0%	1%	4%	0%	0%	0%	0%	0%
Balancing Energy Bilateral - Export/Non-LBMP Market Bilaterals	5%	3%	4%	5%	4%	2%	3%	1%	2%	4%	7%	5%
Balancing Energy Bilateral - Wheel Through Bilaterals	-11%	-16%	-11%	-6%	-11%	-9%	-7%	0%	1%	0%	1%	-4%
Transactions Summary												
LBMP	59%	59%	58%	59%	55%	56%	59%	54%	53%	49%	52%	56%
Internal Bilaterals	39%	39%	40%	39%	39%	38%	34%	39%	41%	43%	41%	38%
Import Bilaterals	0%	0%	0%	0%	4%	4%	5%	5%	4%	6%	4%	4%
Export Bilaterals	1%	1%	2%	2%	2%	1%	1%	1%	2%	2%	2%	2%
Wheels Through	1%	0%	1%	1%	0%	1%	1%	1%	1%	1%	1%	1%
Market Share of Total Load												
Day Ahead Market	103.2%	104.8%	103.6%	104.2%	103.9%	104.7%	101.7%	106.0%	105.7%	105.4%	104.4%	103.6%
Balancing Energy +	-3.2%	-4.8%	-3.6%	-4.2%	-3.9%	-4.7%	-1.7%	-6.0%	-5.7%	-5.4%	-4.4%	-3.6%
Total MWh	14,668,929	13,467,615	13,748,838	12,438,627	12,949,362	14,203,656	17,679,368	15,175,205	13,262,421	12,728,932	13,119,732	14,878,419
Average Daily Energy Sendout/Month GWh	453	453	429	398	407	469	561	485	438	407	421	450

+ Balancing Energy: Load(MW) purchased at Real Time LBMP.

* The signs for the detail section intuitively reflect the direction of power flow eliminating the use of double negatives when Balancing Energy is negative.

Notes: Percent totals may not equal 100% due to rounding.
Virtual Transactions are not reflected in this chart.

NYISO Markets 2014 Energy Statistics

	<u>January</u>	<u>February</u>	<u>March</u>	<u>April</u>	<u>May</u>	<u>June</u>	<u>July</u>	<u>August</u>	<u>September</u>	<u>October</u>	<u>November</u>	<u>December</u>
<u>DAY AHEAD LBMP</u>												
Price *	\$155.11											
Standard Deviation	\$121.52											
Load Weighted Price **	\$164.06											
<u>RTC LBMP</u>												
Price *	\$138.41											
Standard Deviation	\$125.42											
Load Weighted Price **	\$147.06											
<u>REAL TIME LBMP</u>												
Price *	\$137.90											
Standard Deviation	\$122.32											
Load Weighted Price **	\$147.77											
Average Daily Energy Sendout/Month GWh	475											

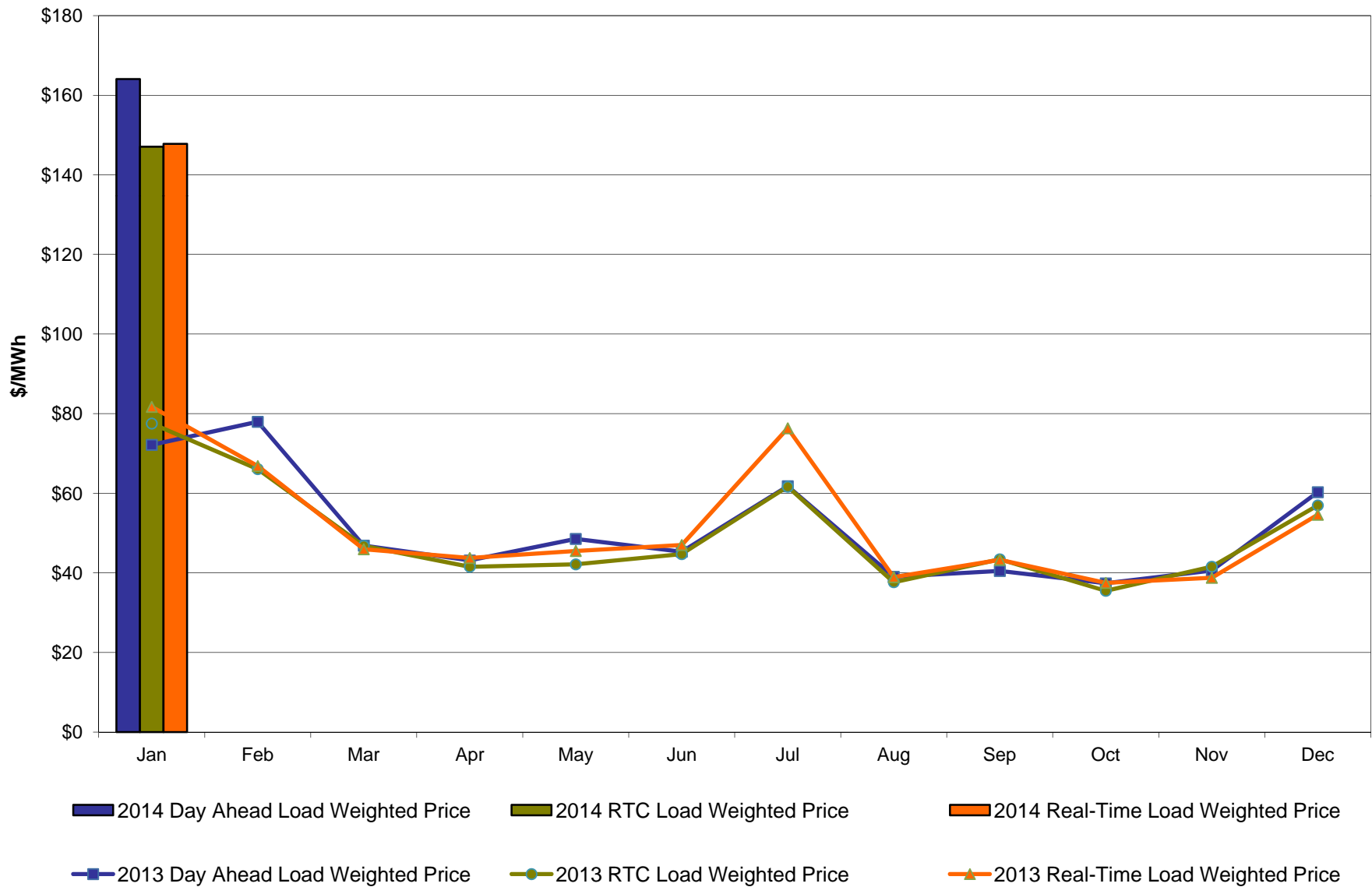
NYISO Markets 2013 Energy Statistics

	<u>January</u>	<u>February</u>	<u>March</u>	<u>April</u>	<u>May</u>	<u>June</u>	<u>July</u>	<u>August</u>	<u>September</u>	<u>October</u>	<u>November</u>	<u>December</u>
<u>DAY AHEAD LBMP</u>												
Price *	\$69.17	\$75.82	\$45.97	\$42.21	\$45.87	\$42.66	\$56.90	\$37.19	\$38.32	\$36.15	\$39.18	\$57.72
Standard Deviation	\$47.21	\$29.98	\$9.40	\$7.84	\$18.77	\$17.98	\$37.12	\$11.85	\$15.21	\$9.15	\$13.56	\$28.61
Load Weighted Price **	\$72.17	\$77.95	\$46.85	\$43.13	\$48.52	\$45.32	\$61.77	\$39.00	\$40.47	\$37.37	\$40.58	\$60.27
<u>RTC LBMP</u>												
Price *	\$73.69	\$64.15	\$45.75	\$40.50	\$39.51	\$42.00	\$55.41	\$35.90	\$39.06	\$34.08	\$39.57	\$54.53
Standard Deviation	\$88.27	\$36.96	\$22.62	\$14.79	\$24.44	\$30.96	\$58.54	\$18.35	\$60.70	\$17.38	\$30.77	\$41.66
Load Weighted Price **	\$77.52	\$66.07	\$46.79	\$41.52	\$42.14	\$44.70	\$61.64	\$37.65	\$43.41	\$35.49	\$41.56	\$56.95
<u>REAL TIME LBMP</u>												
Price *	\$76.47	\$64.87	\$45.01	\$42.74	\$42.32	\$43.93	\$65.57	\$37.03	\$39.02	\$36.02	\$37.28	\$52.49
Standard Deviation	\$83.80	\$38.96	\$16.27	\$15.96	\$26.99	\$34.72	\$89.92	\$20.11	\$36.85	\$19.07	\$25.69	\$34.01
Load Weighted Price **	\$81.71	\$66.83	\$45.94	\$43.73	\$45.50	\$47.00	\$76.32	\$38.92	\$43.28	\$37.47	\$38.75	\$54.60
Average Daily Energy Sendout/Month GWh	453	453	429	398	407	469	561	485	438	407	421	450

* Average zonal load weighted prices.

** Average zonal load weighted prices, load weighted in each hour.

NYISO Monthly Average Internal LBMPs 2013- 2014

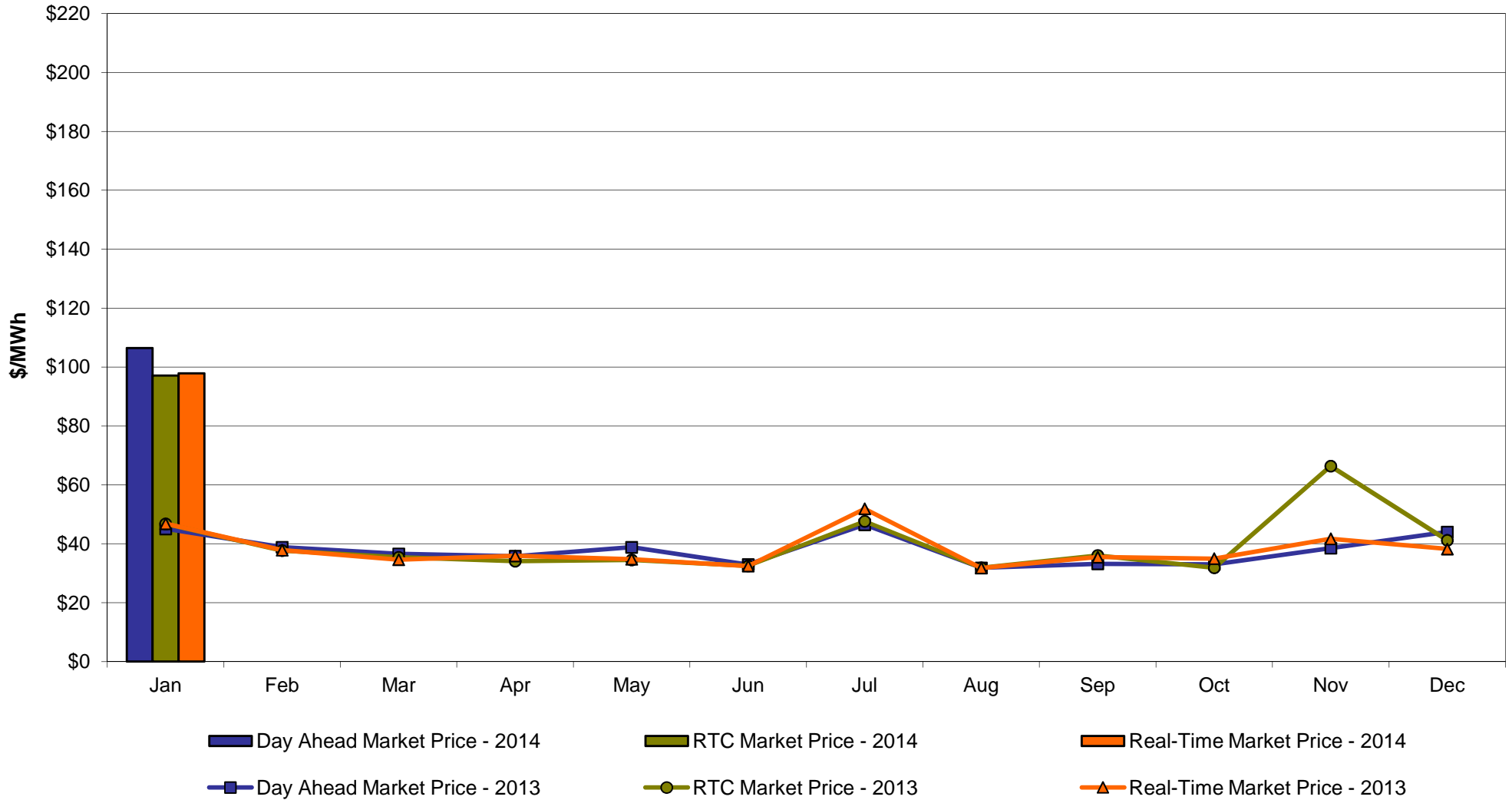


January 2014 Zonal LBMP Statistics for NYISO (\$/MWh)

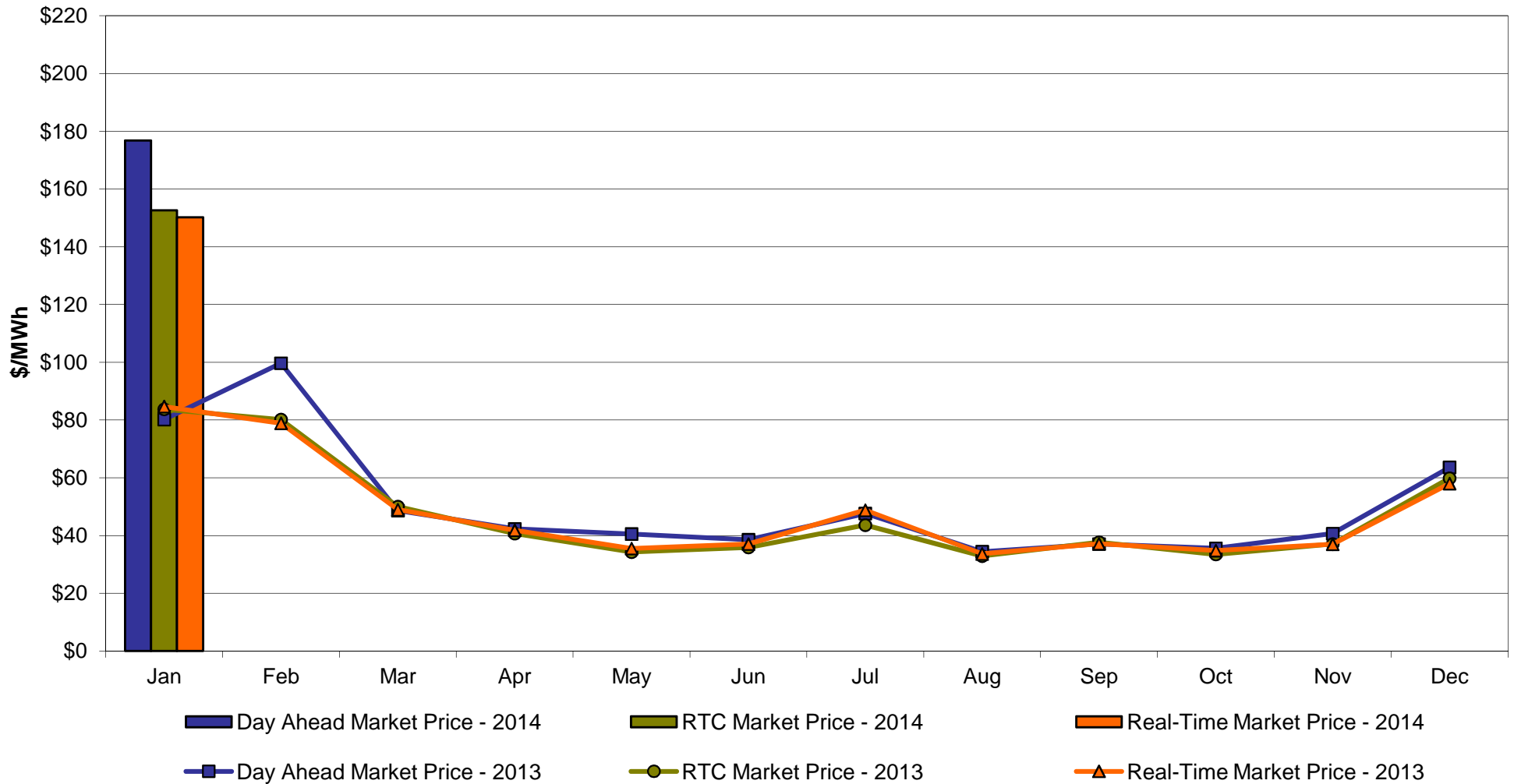
	<u>WEST</u> <u>Zone A</u>	<u>GENESEE</u> <u>Zone B</u>	<u>NORTH</u> <u>Zone D</u>	<u>CENTRAL</u> <u>Zone C</u>	<u>MOHAWK</u> <u>VALLEY</u> <u>Zone E</u>	<u>CAPITAL</u> <u>Zone F</u>	<u>HUDSON</u> <u>VALLEY</u> <u>Zone G</u>	<u>MILLWOOD</u> <u>Zone H</u>	<u>DUNWOODIE</u> <u>Zone I</u>	<u>NEW YORK</u> <u>CITY</u> <u>Zone J</u>	<u>LONG</u> <u>ISLAND</u> <u>Zone K</u>
DAY AHEAD LBMP											
Unweighted Price *	106.48	113.15	117.08	121.65	128.25	176.83	166.26	166.78	166.32	175.92	187.11
Standard Deviation	101.83	109.07	118.40	112.88	120.08	129.83	125.69	126.41	126.00	139.36	124.88
RTC LBMP											
Unweighted Price *	97.08	98.68	95.98	106.03	111.12	152.60	144.08	143.87	143.97	157.74	176.73
Standard Deviation	122.34	104.95	110.15	111.87	117.50	135.46	128.84	128.61	128.24	147.61	154.01
REAL TIME LBMP											
Unweighted Price *	97.87	100.84	98.19	107.72	113.12	150.20	142.77	142.51	142.65	156.31	178.52
Standard Deviation	113.49	104.02	107.28	110.05	116.62	134.46	127.72	127.70	127.28	144.91	151.04
	<u>ONTARIO</u> <u>IESO</u> <u>Zone O</u>	<u>HYDRO</u> <u>QUEBEC</u> <u>(Wheel)</u> <u>Zone M</u>	<u>HYDRO</u> <u>QUEBEC</u> <u>(Import/Export)</u> <u>Zone M</u>	<u>PJM</u> <u>Zone P</u>	<u>NEW</u> <u>ENGLAND</u> <u>Zone N</u>	<u>CROSS</u> <u>SOUND</u> <u>CABLE</u> <u>Controllable</u> <u>Line</u>	<u>NORTHPORT-</u> <u>NORWALK</u> <u>Controllable</u> <u>Line</u>	<u>NEPTUNE</u> <u>Controllable</u> <u>Line</u>	<u>LINDEN VFT</u> <u>Controllable</u> <u>Line</u>	<u>HUDSON</u> <u>Controllable</u> <u>Line</u>	<u>Dennison</u> <u>Controllable</u> <u>Line</u>
DAY AHEAD LBMP											
Unweighted Price *	105.00	116.67	116.67	138.68	179.30	178.31	178.22	178.08	168.71	175.45	116.31
Standard Deviation	100.58	121.78	121.78	116.21	121.74	118.21	119.78	124.93	141.04	139.34	121.88
RTC LBMP											
Unweighted Price *	78.07	80.84	80.19	113.17	136.32	150.63	149.64	148.23	142.15	142.16	91.32
Standard Deviation	70.74	104.22	104.27	101.18	105.08	116.43	115.72	116.51	116.70	116.28	101.81
REAL TIME LBMP											
Unweighted Price *	85.19	96.72	96.44	120.48	151.96	159.17	153.60	156.17	151.81	151.60	100.20
Standard Deviation	90.83	102.48	102.63	116.29	117.66	128.60	119.39	130.04	137.63	136.71	118.63

* Straight LBMP averages

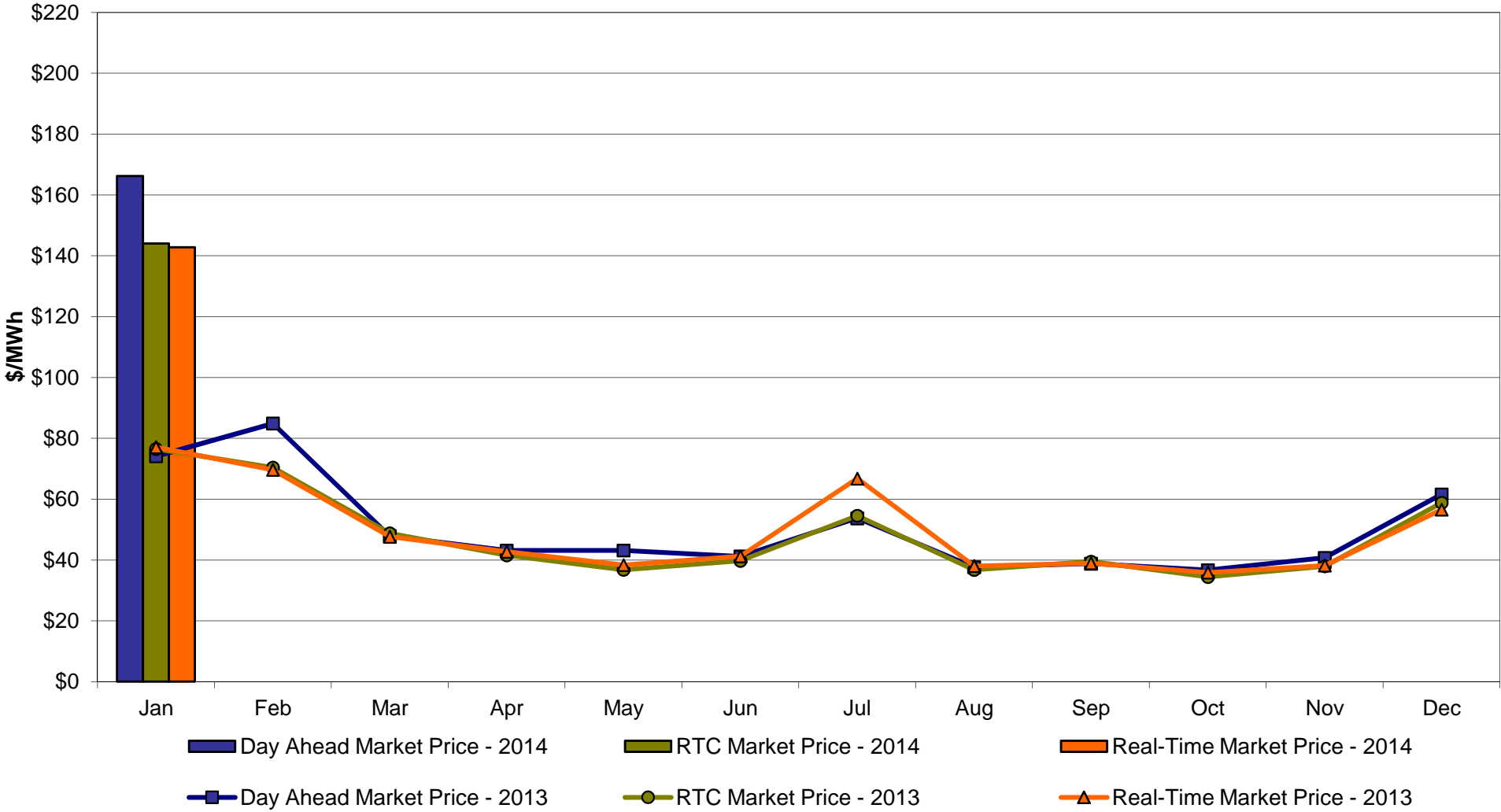
West Zone A Monthly Average LBMP Prices 2013 - 2014



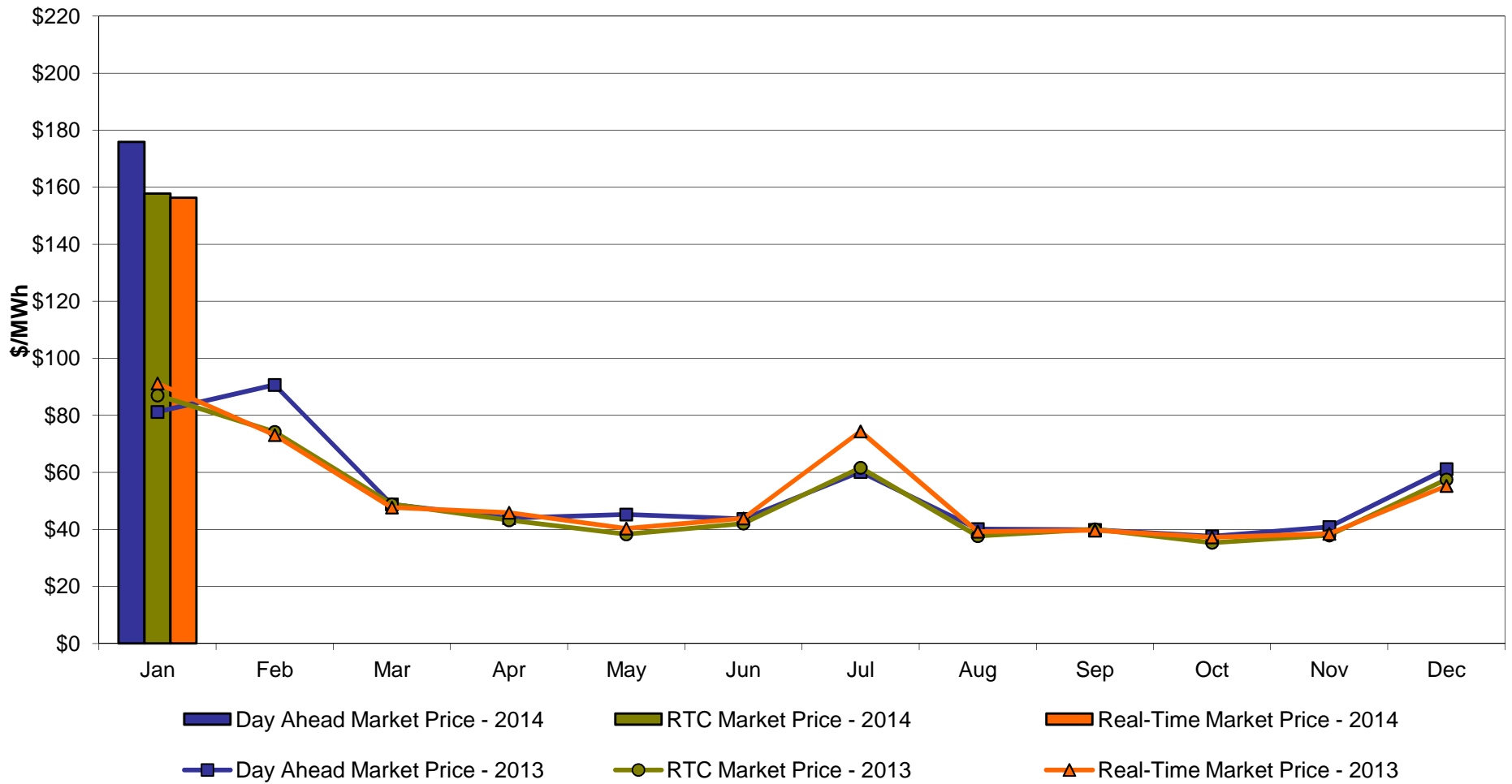
Capital Zone F Monthly Average LBMP Prices 2013 - 2014



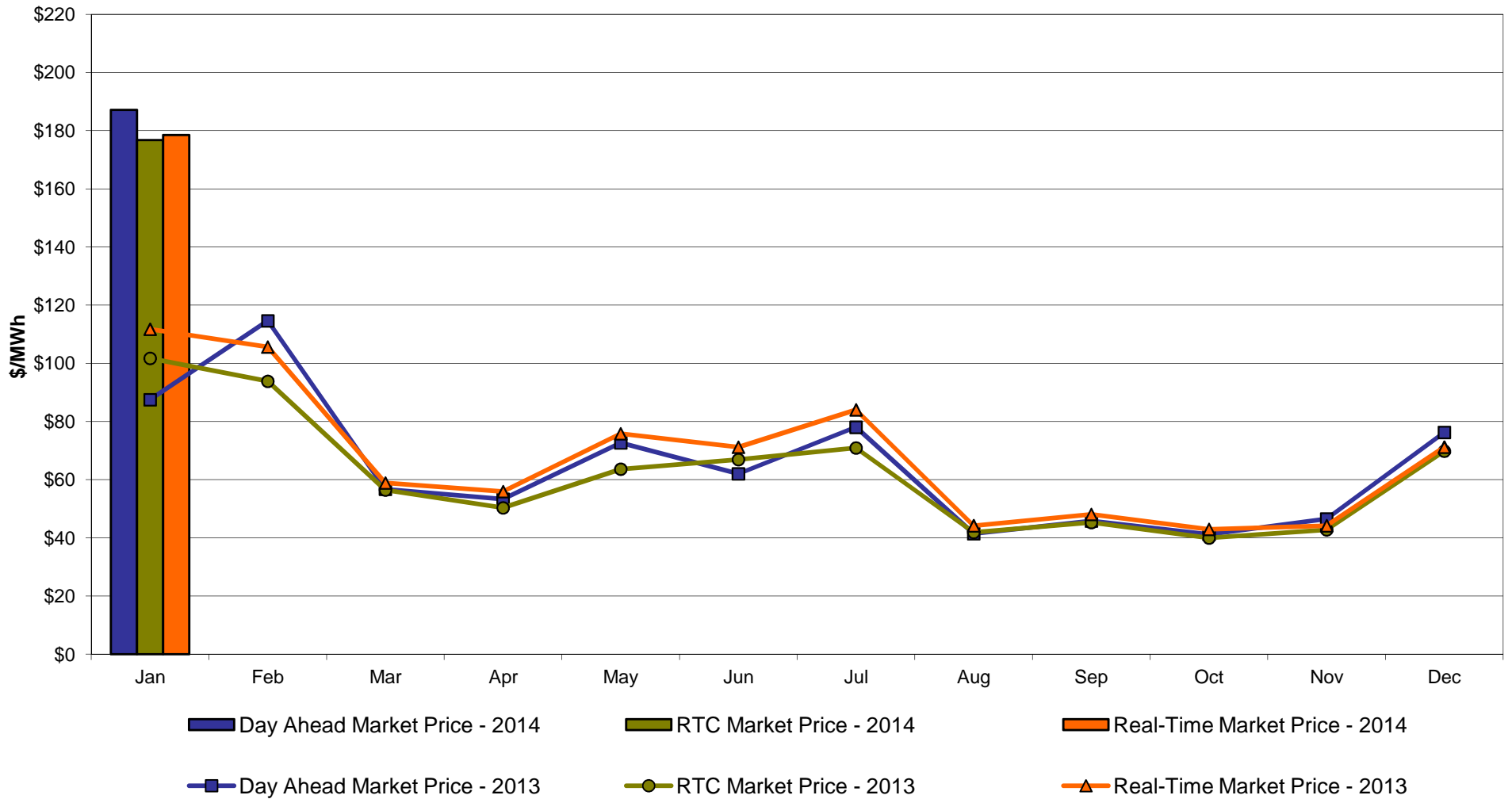
Hudson Valley Zone G Monthly Average LBMP Prices 2013 - 2014



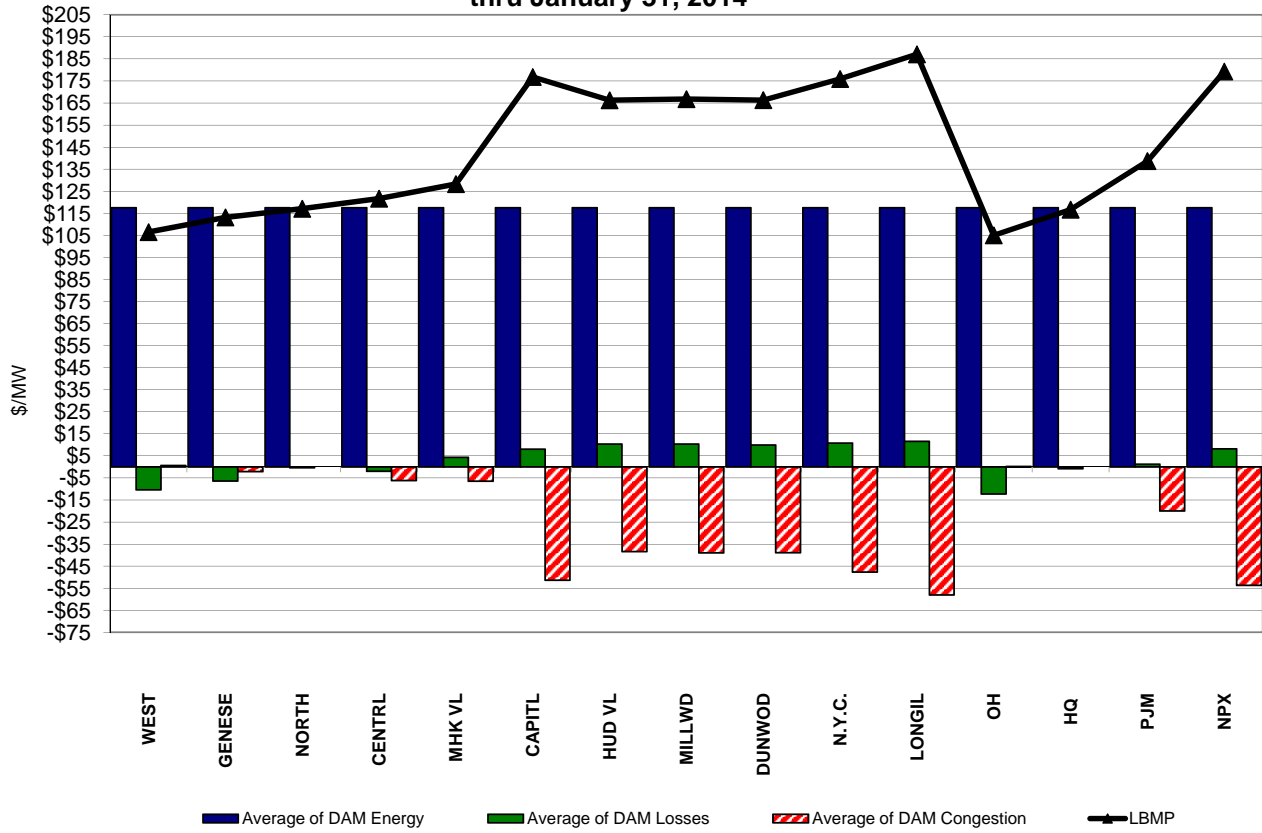
**NYC Zone J
Monthly Average LBMP Prices 2013 - 2014**



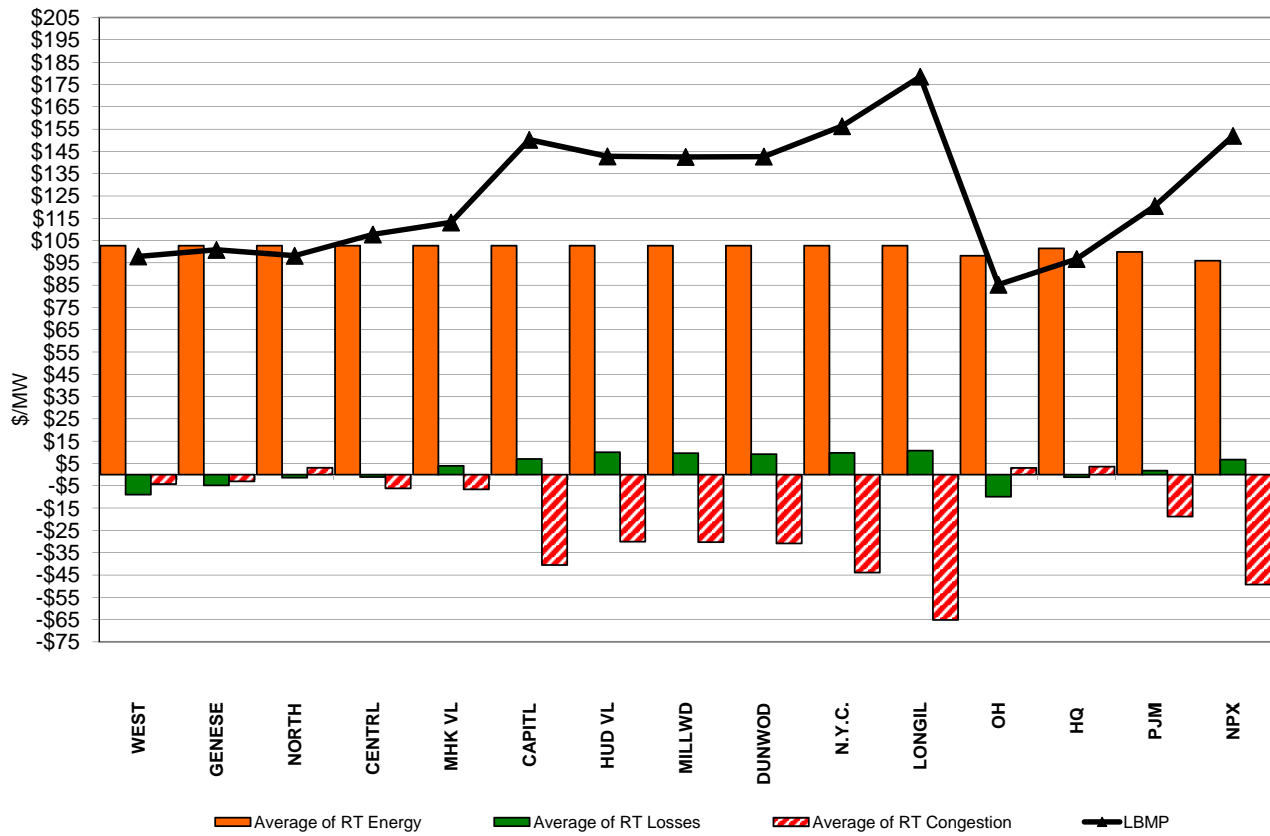
Long Island Zone K Monthly Average LBMP Prices 2013 - 2014



**DAM Zonal Unweighted Monthly Average LBMP Components
thru January 31, 2014**

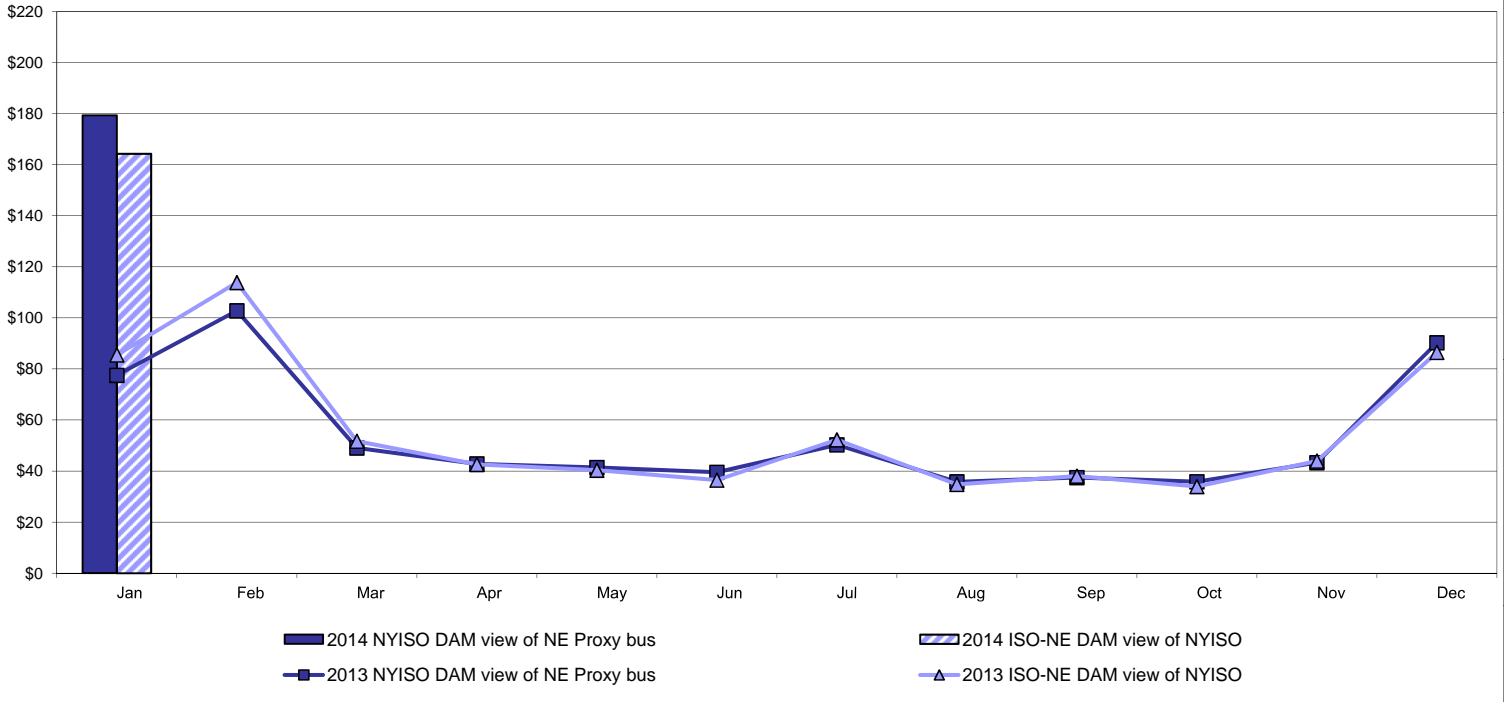


**RT Zonal Unweighted Monthly Average LBMP Components
thru January 31, 2014**

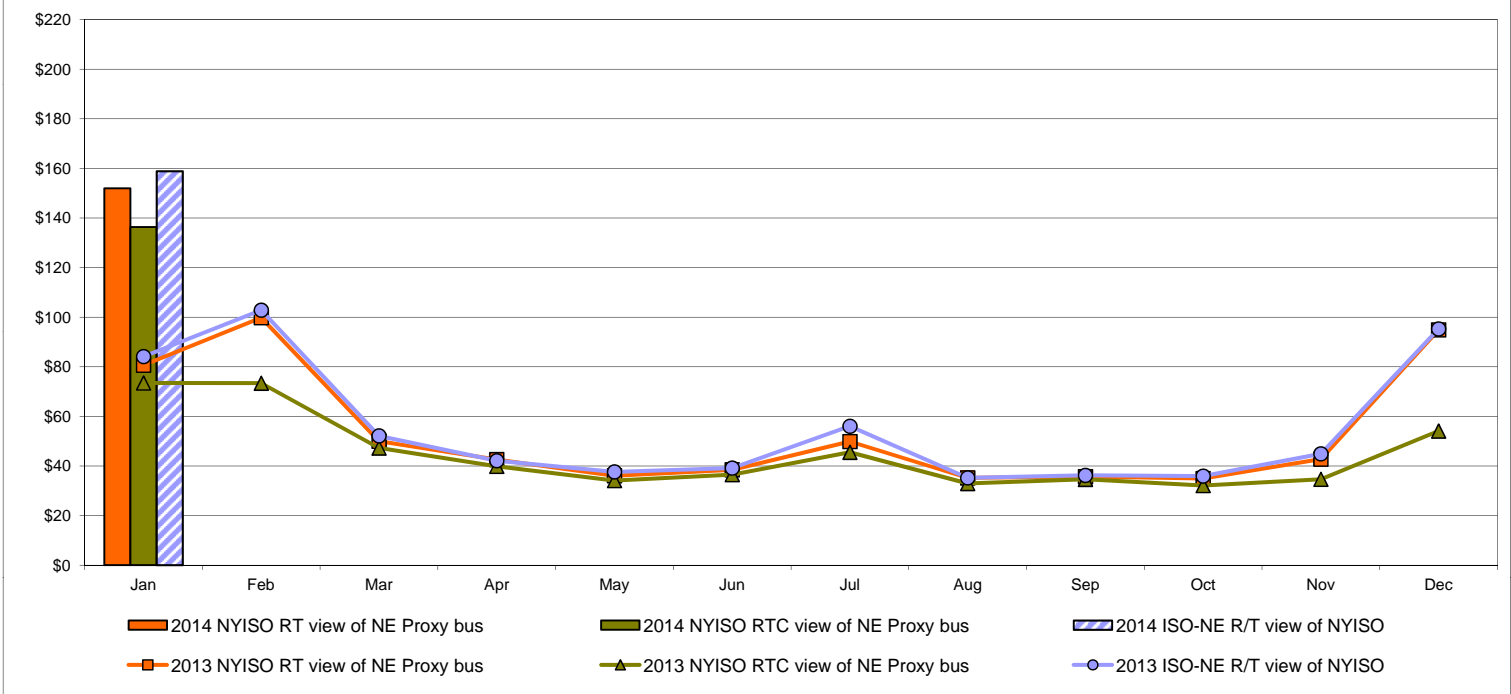


External Comparison ISO-New England

Day Ahead Market External Zone Comparison: ISO-NE (\$/MWh)

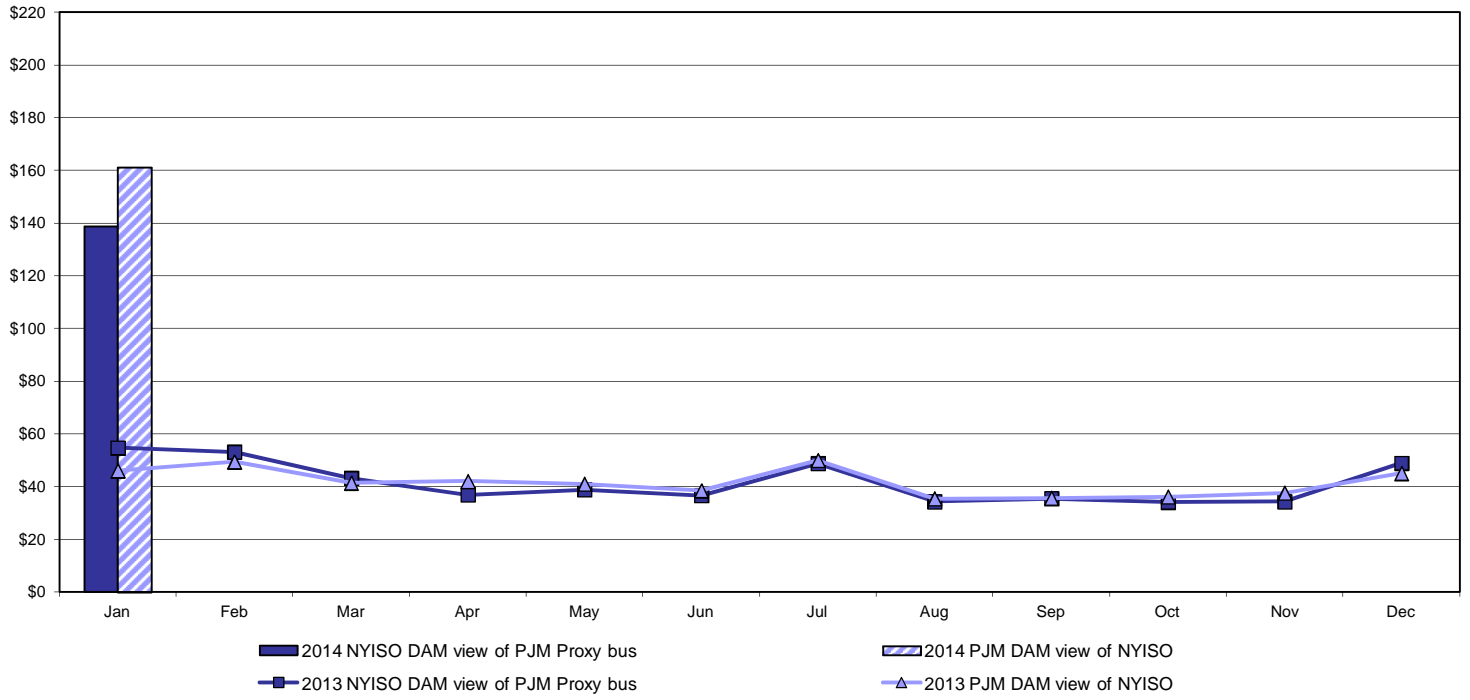


Real Time Market External Zone Comparison: ISO-NE (\$/MWh)

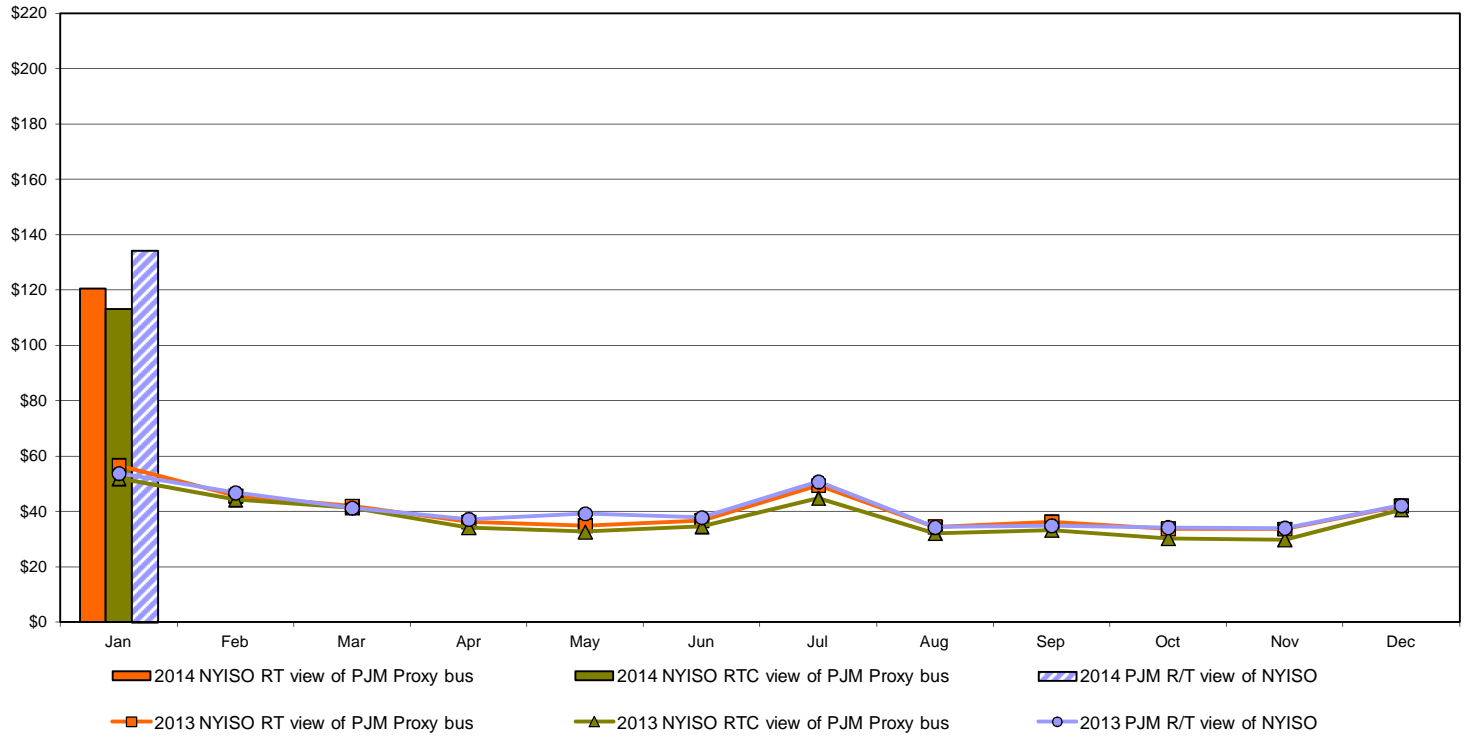


External Comparison PJM

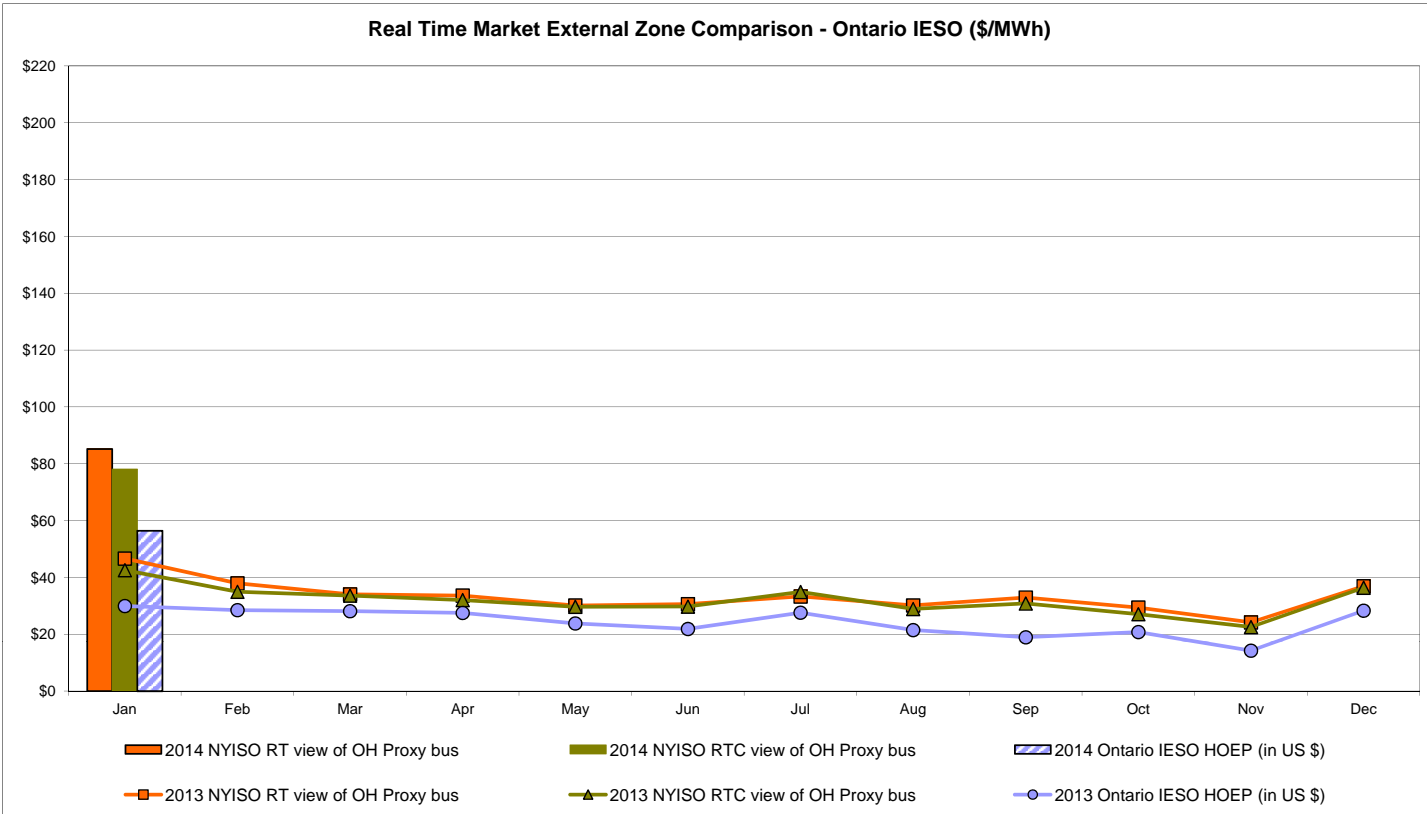
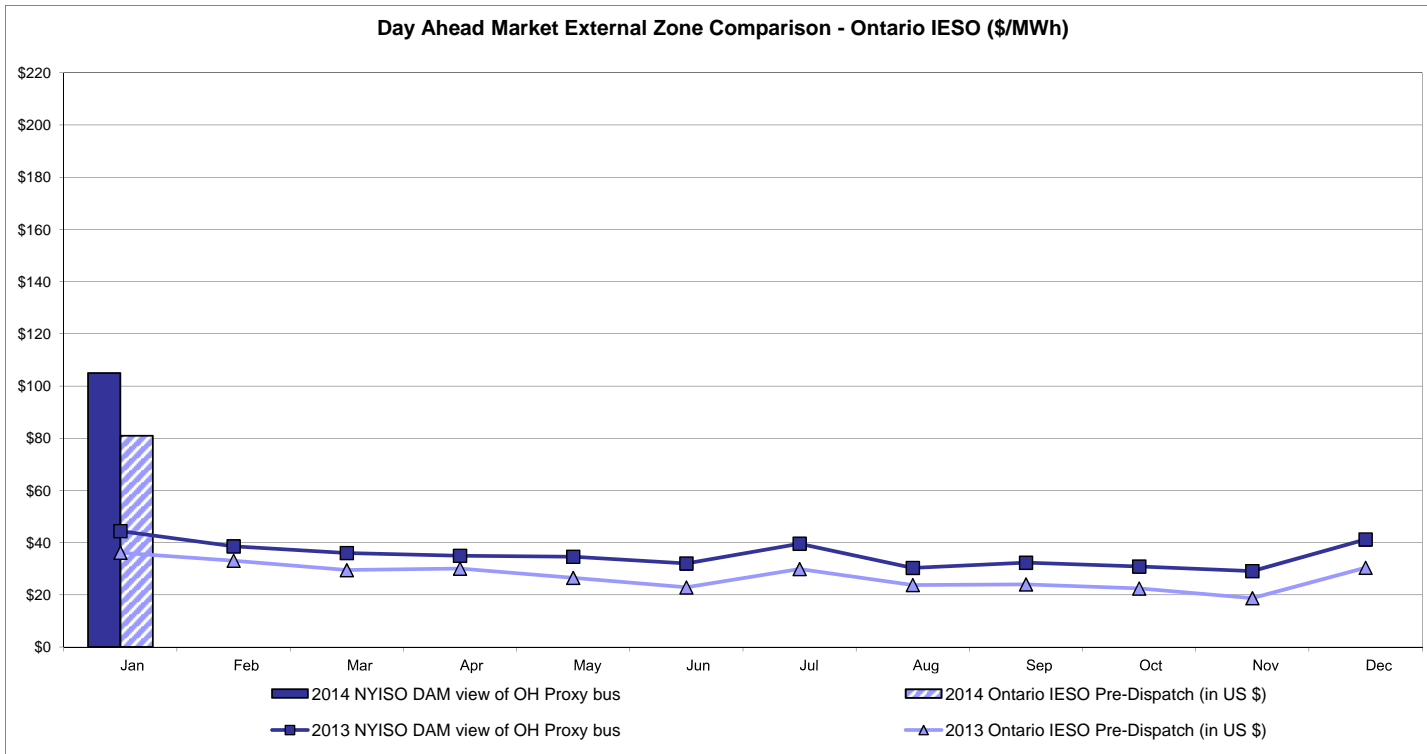
Day Ahead Market External Zone Comparison - PJM (\$/MWh)



Real Time Market External Zone Comparison - PJM (\$/MWh)

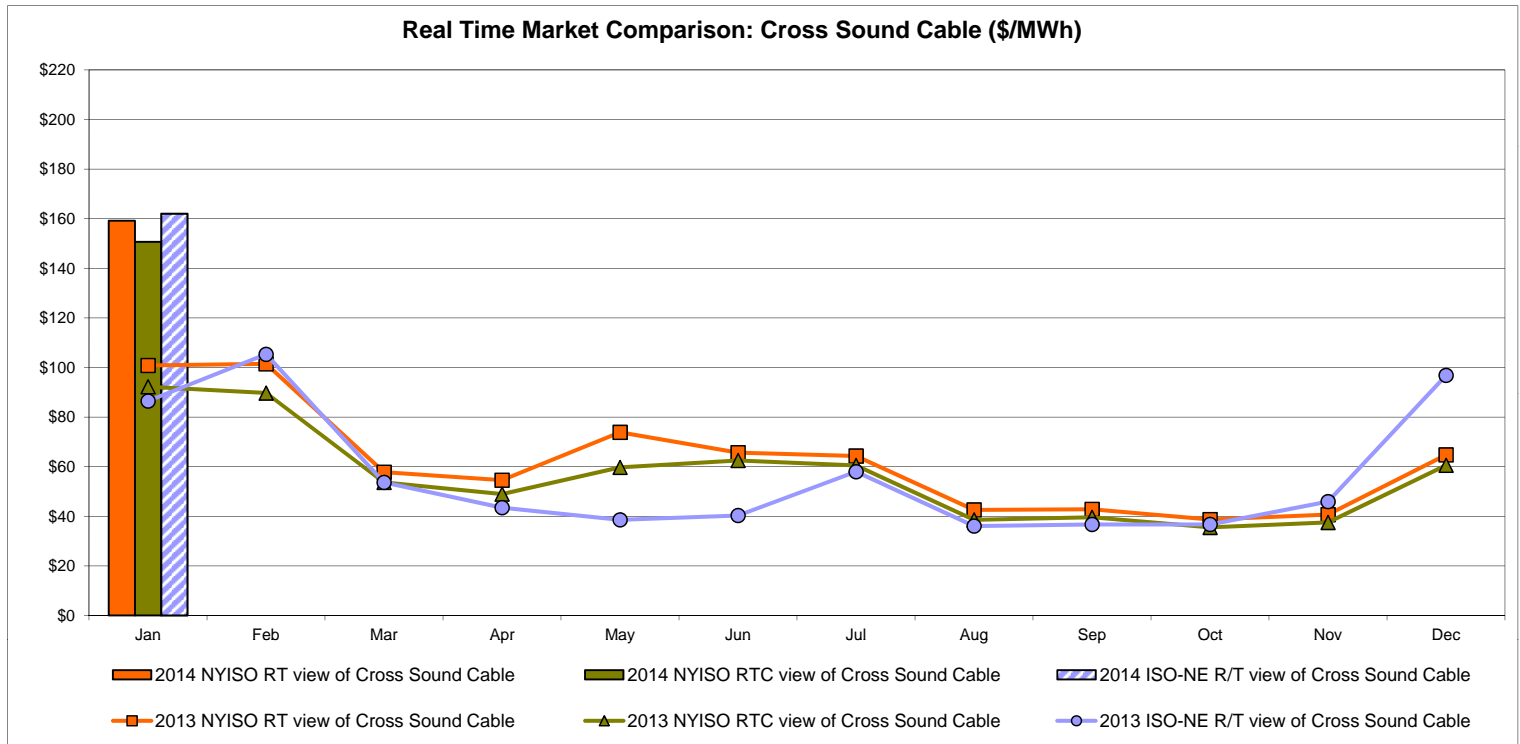
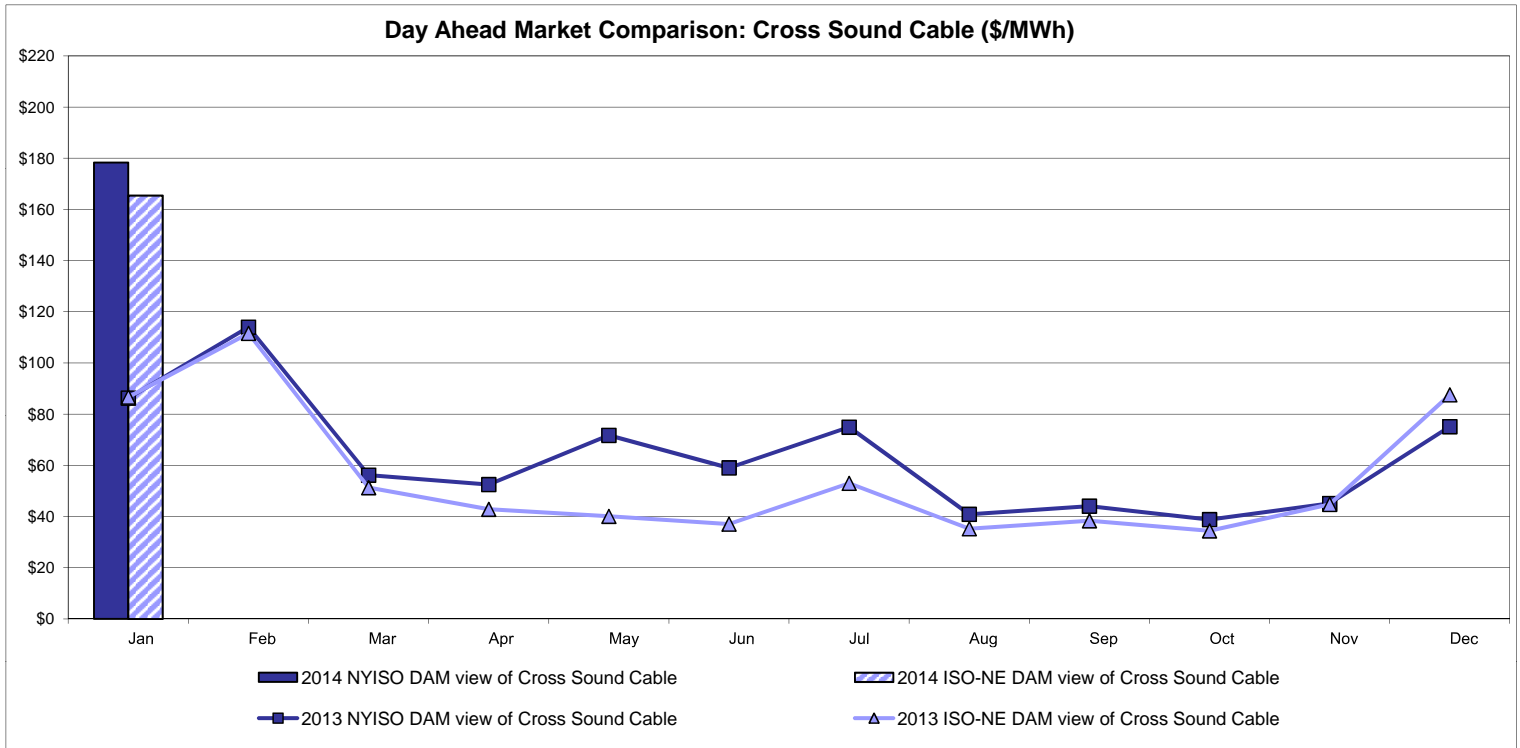


External Comparison Ontario IESO



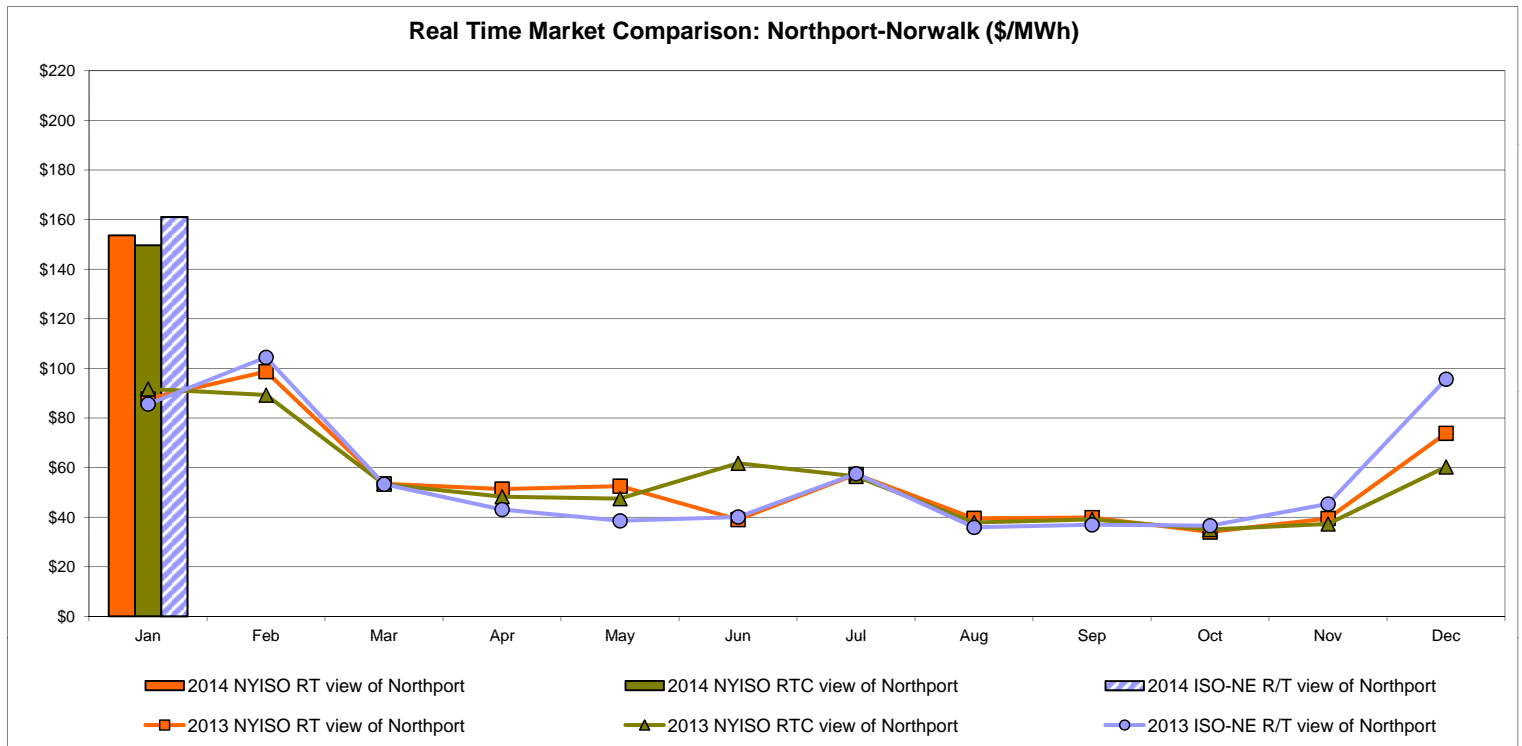
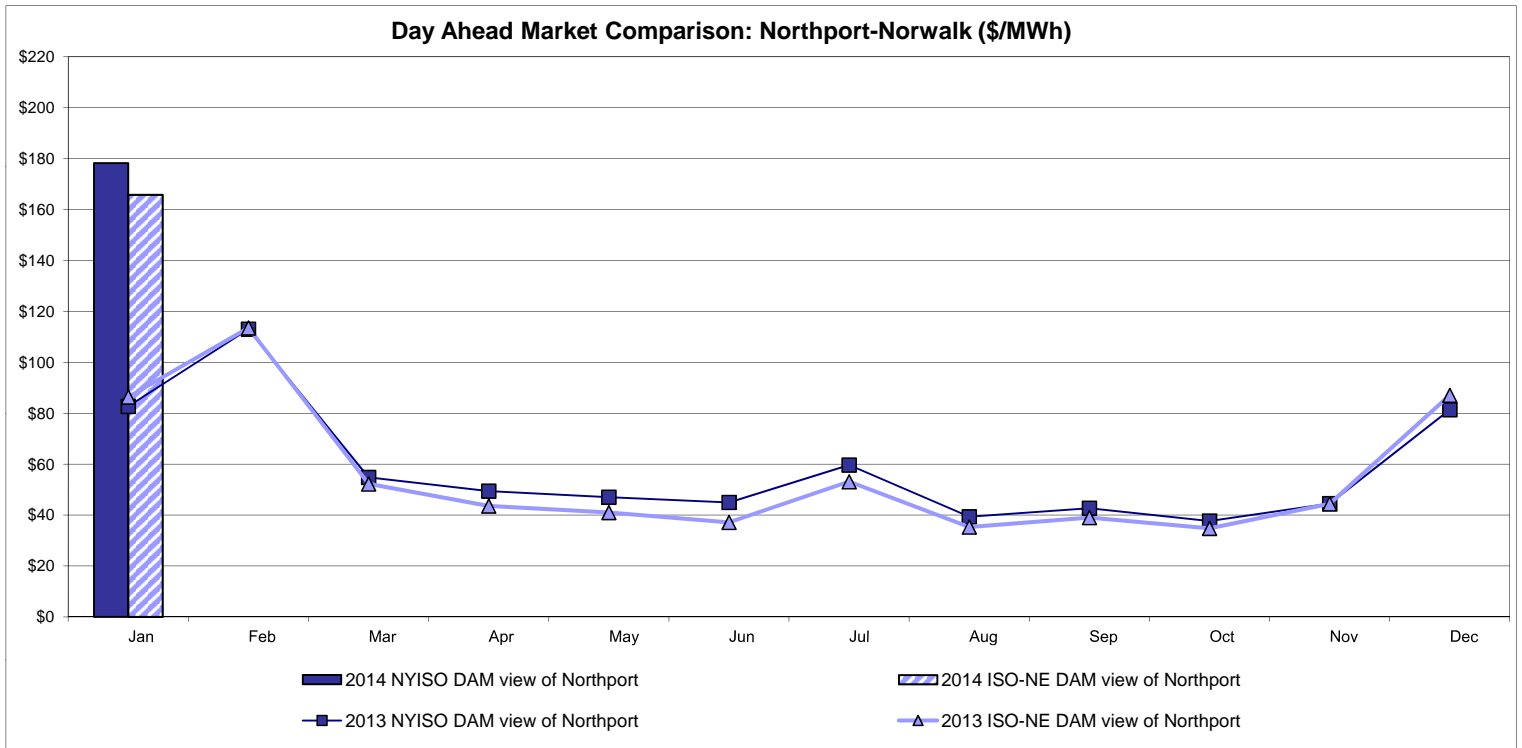
Notes: Exchange factor used for January 2014 was 0.914 to US \$
 HOEP: Hourly Ontario Energy Price
 Pre-Dispatch: Projected Energy Price

External Controllable Line: Cross Sound Cable (New England)



Note:
 ISO-NE Forecast is an advisory posting @ 18:00 day before.
 The DAM and R/T prices at the Shorham 13899 interface are used for ISO-NE.
 The DAM and R/T prices at the CSC interface are used for NYISO.

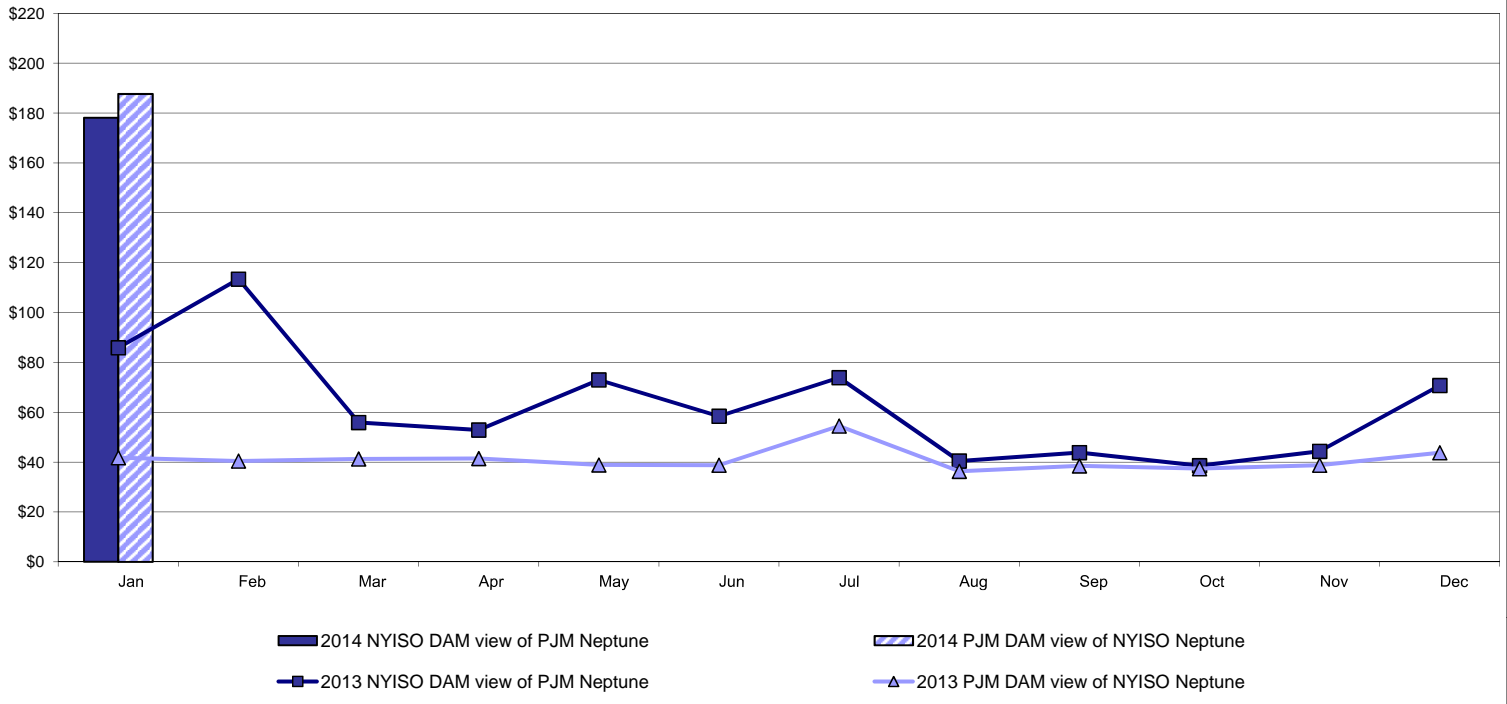
External Controllable Line: Northport - Norwalk (New England)



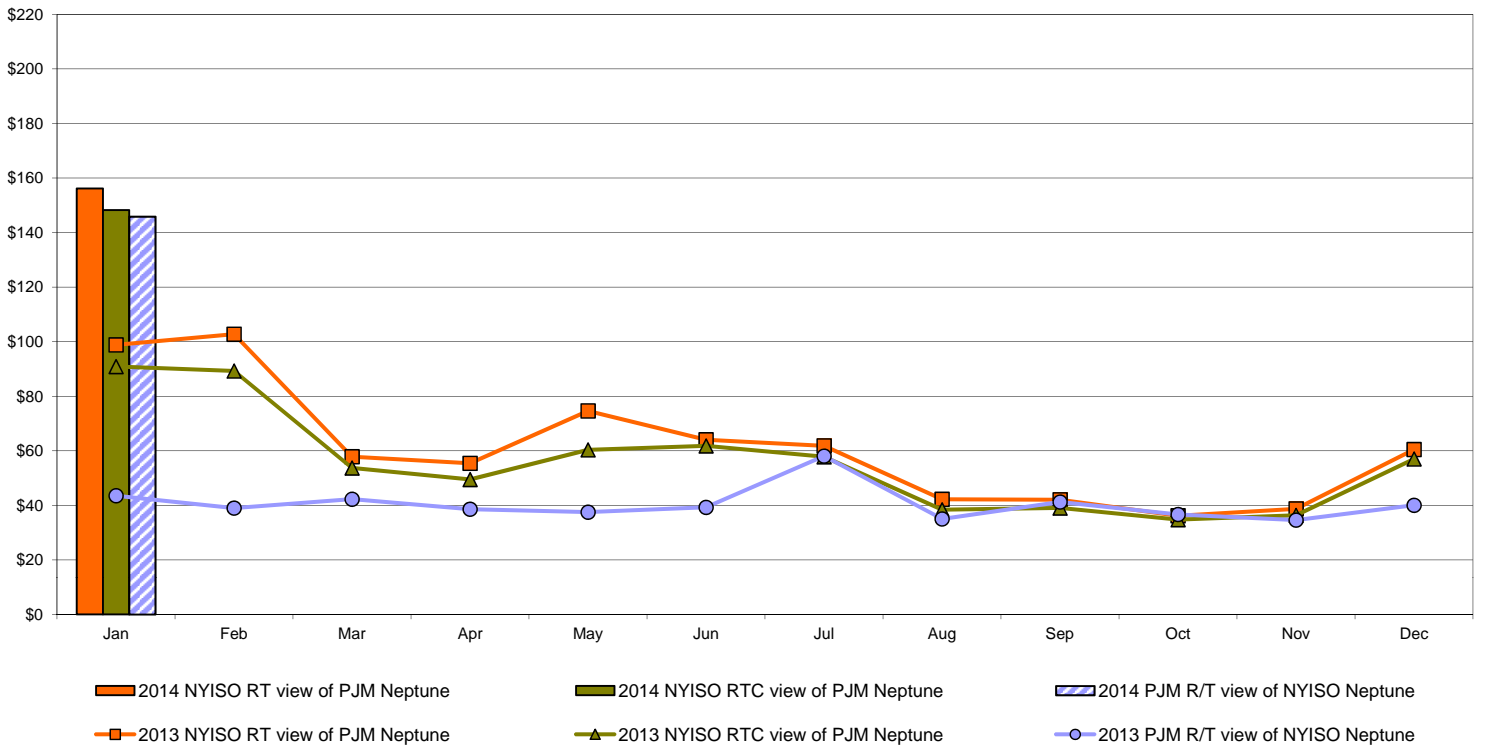
Note:
 ISO-NE Forecast is an advisory posting @ 18:00 day before.
 The DAM and R/T prices at the Northport 138 interface are used for ISO-NE.
 The DAM and R/T prices at the 1385 interface are used for NYISO.

External Controllable Line: Neptune (PJM)

Day Ahead Market Comparison: Neptune (\$/MWh)

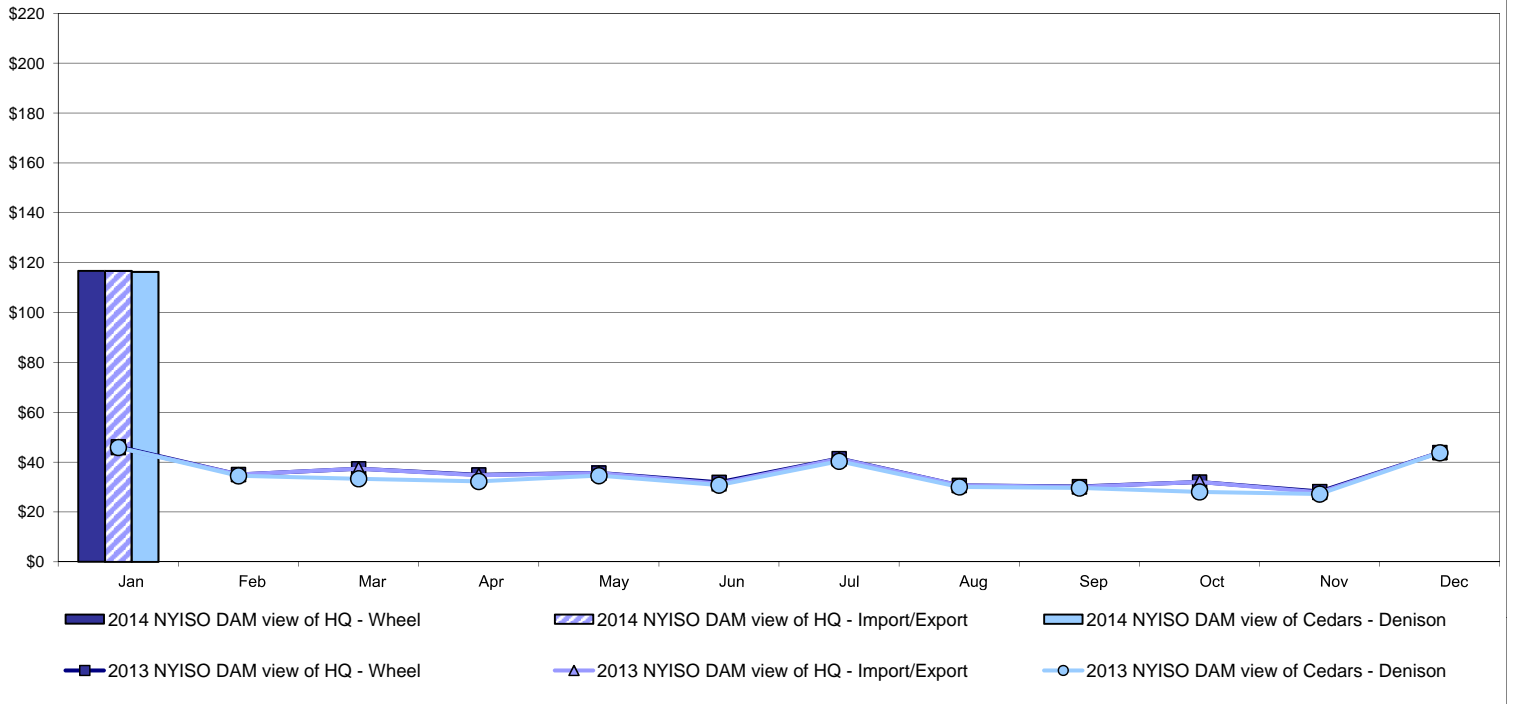


Real Time Market Comparison: Neptune (\$/MWh)

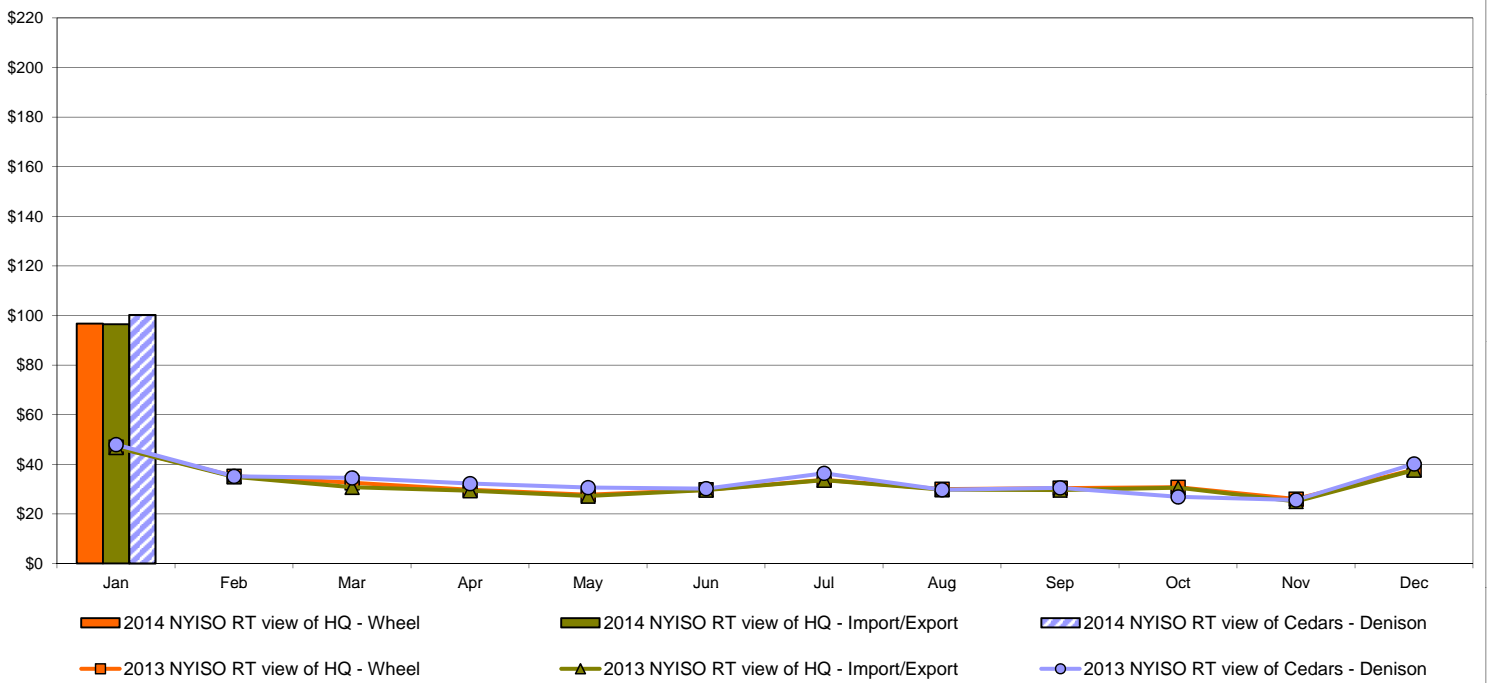


External Comparison Hydro-Quebec

Day Ahead Market External Zone Comparison - HQ (\$/MWh)

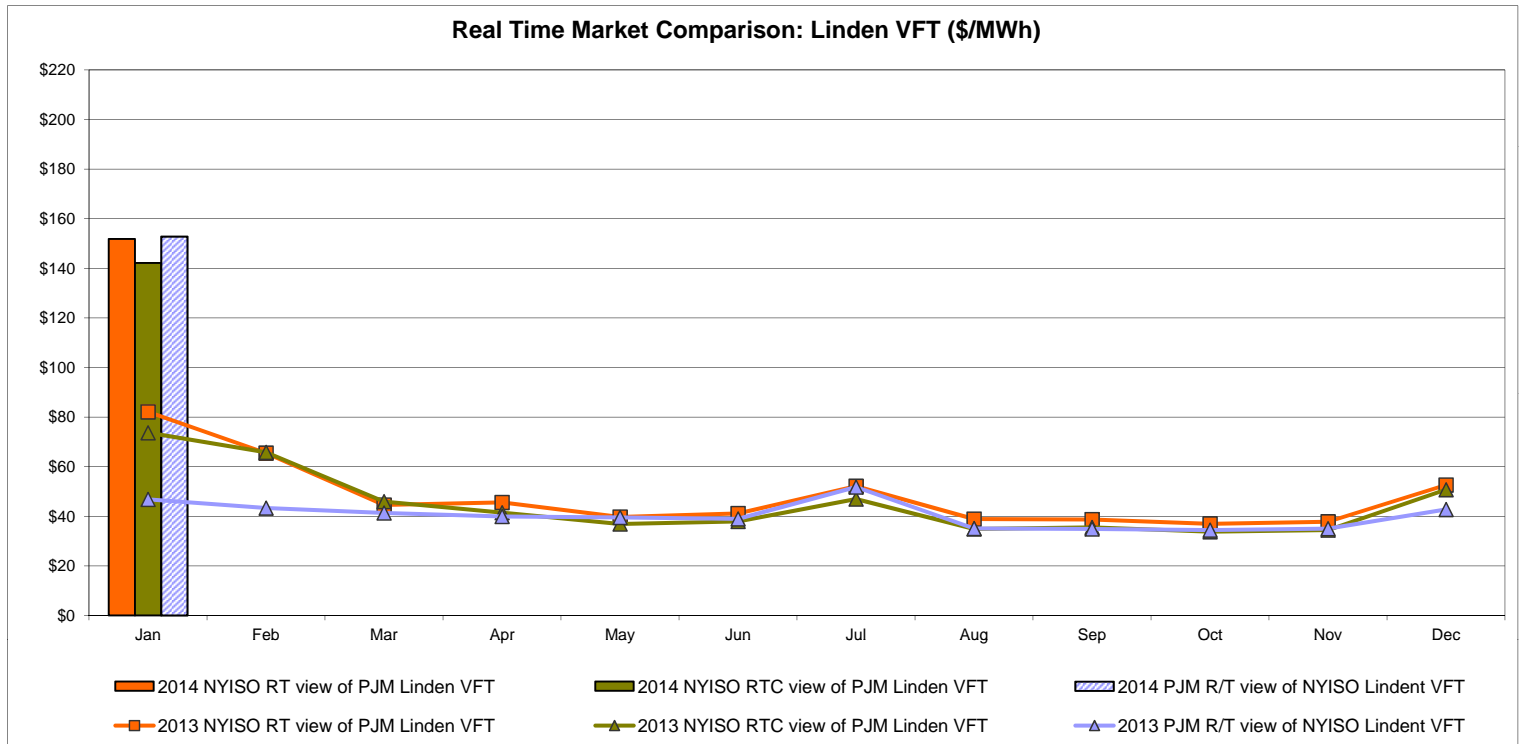
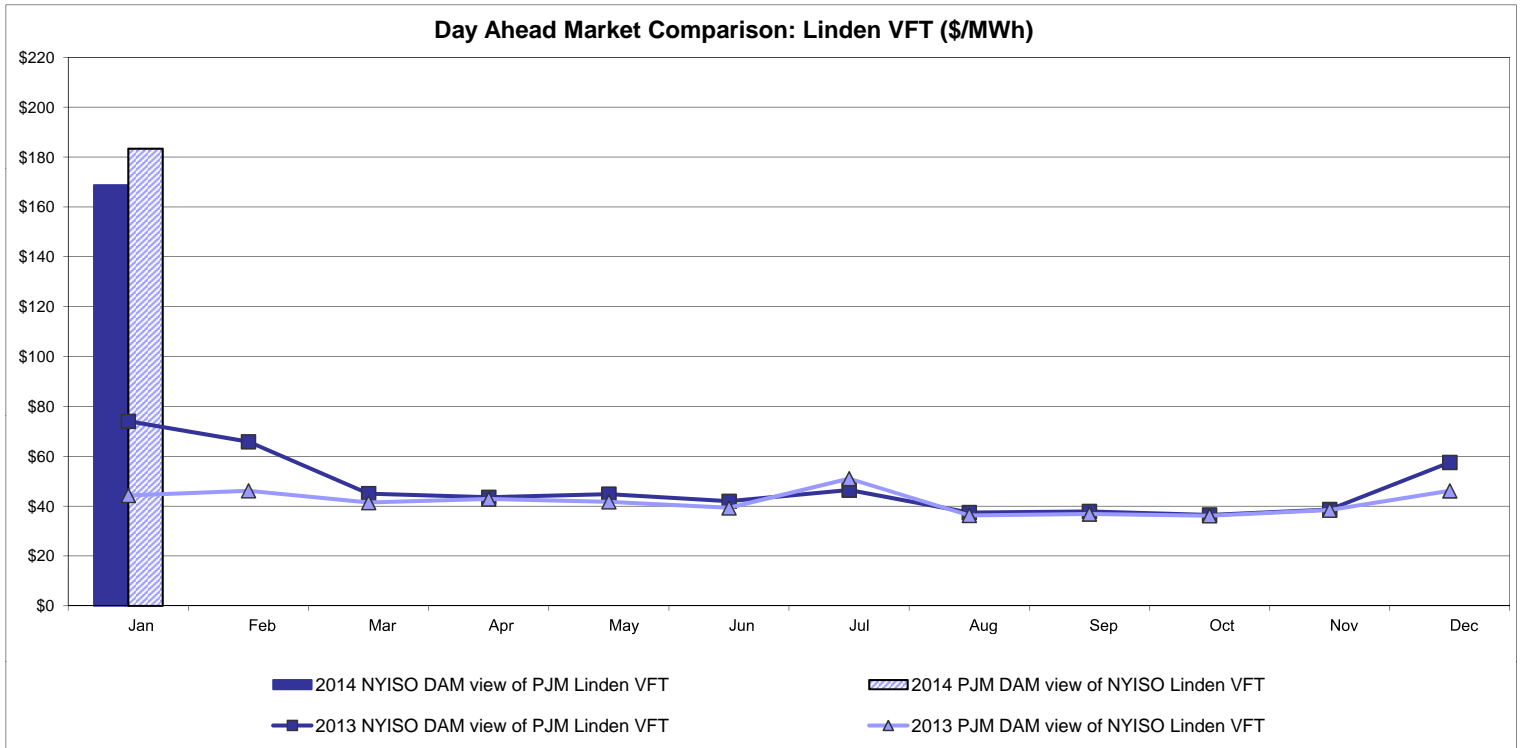


Real Time Market External Zone Comparison - HQ (\$/MWh)

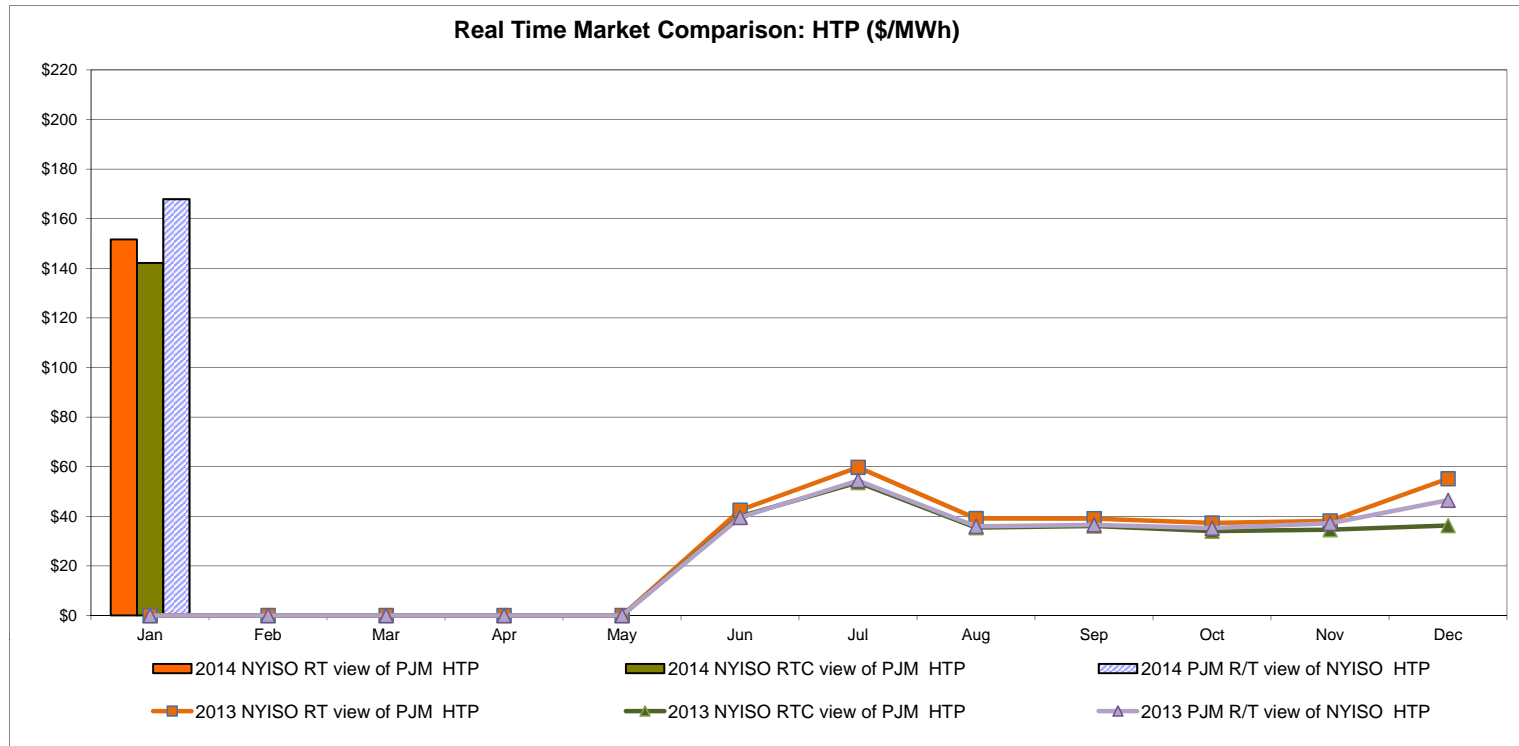
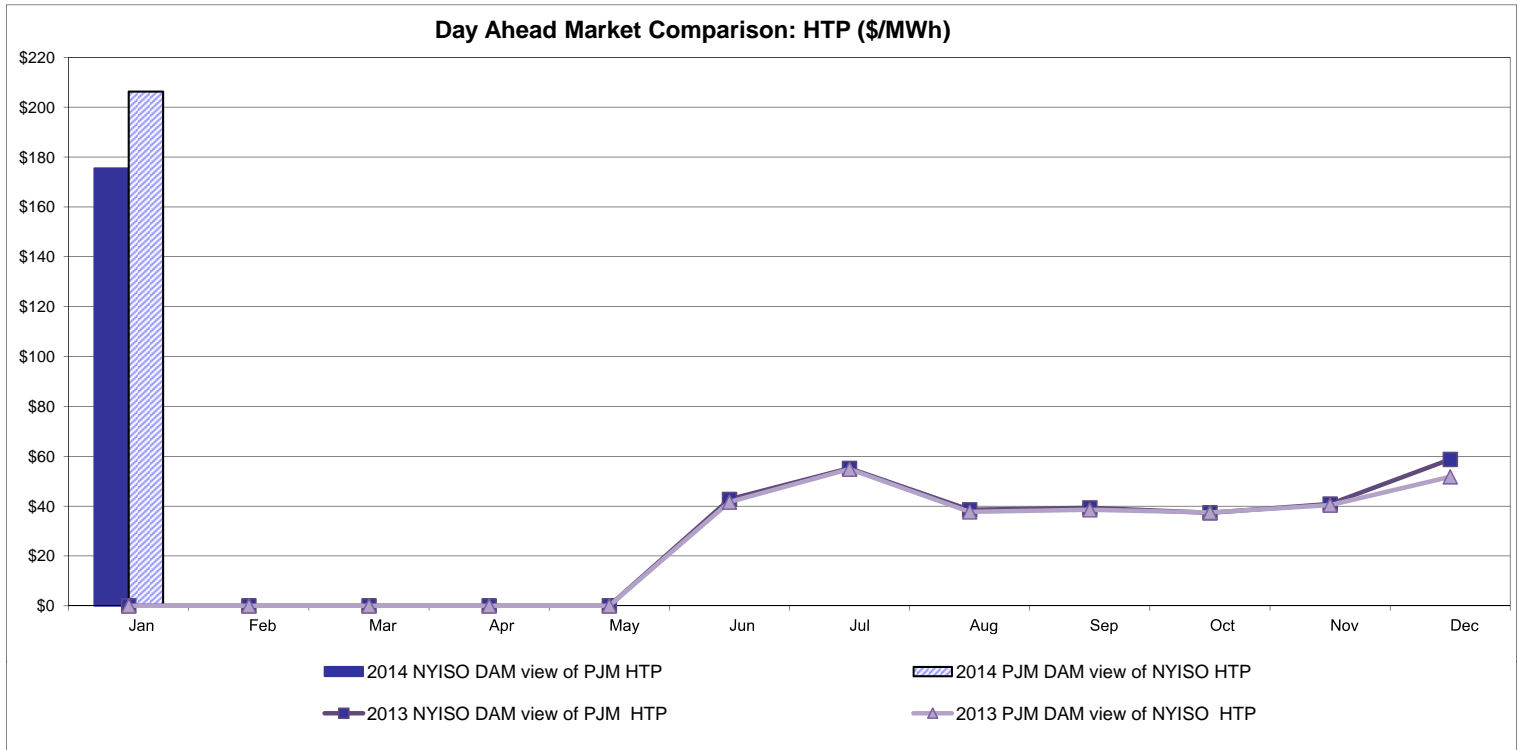


Note:
Hydro-Quebec Prices are unavailable.

External Controllable Line: Linden VFT (PJM)



External Controllable Line: Hudson (PJM)

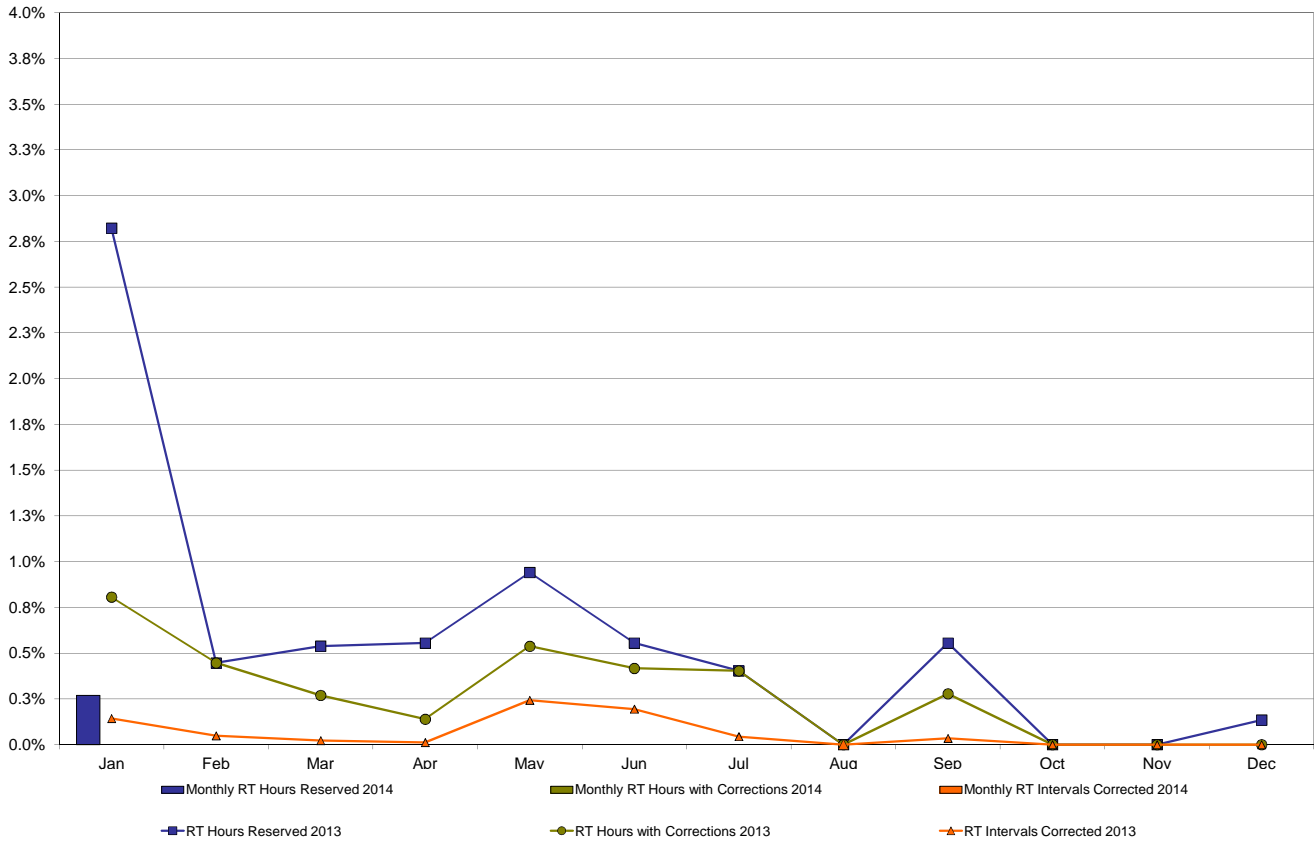


NYISO Real Time Price Correction Statistics

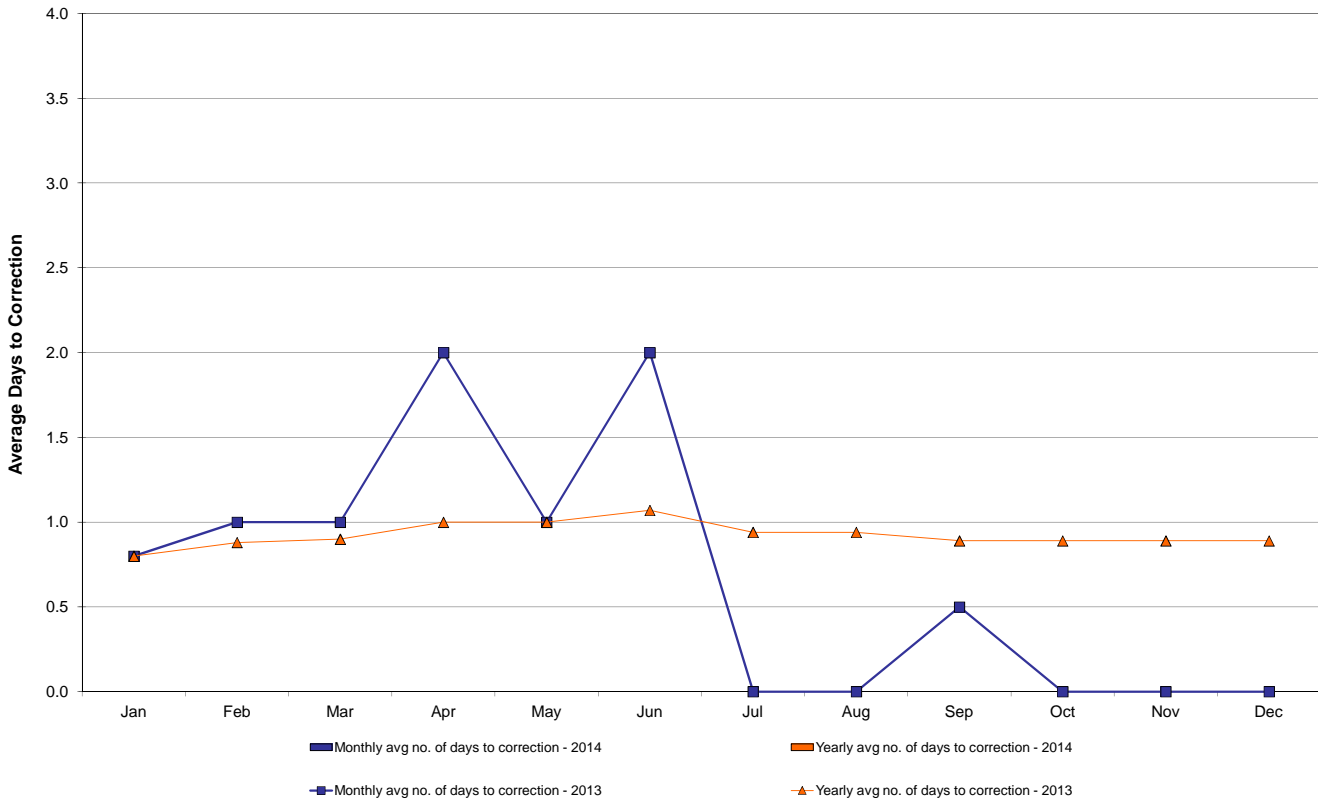
2014		<u>January</u>	<u>February</u>	<u>March</u>	<u>April</u>	<u>May</u>	<u>June</u>	<u>July</u>	<u>August</u>	<u>September</u>	<u>October</u>	<u>November</u>	<u>December</u>
Hour Corrections													
Number of hours with corrections	in the month	0											
Number of hours	in the month	744											
% of hours with corrections	in the month	0.00%											
% of hours with corrections	year-to-date	0.00%											
Interval Corrections													
Number of intervals corrected	in the month	0											
Number of intervals	in the month	9,232											
% of intervals corrected	in the month	0.00%											
% of intervals corrected	year-to-date	0.00%											
Hours Reserved													
Number of hours reserved	in the month	2											
Number of hours	in the month	744											
% of hours reserved	in the month	0.27%											
% of hours reserved	year-to-date	0.27%											
Days to Correction *													
Avg. number of days to correction	in the month	0.00											
Avg. number of days to correction	year-to-date	0.00											
Days Without Corrections													
Days without corrections	in the month	31											
Days without corrections	year-to-date	31											
2013		<u>January</u>	<u>February</u>	<u>March</u>	<u>April</u>	<u>May</u>	<u>June</u>	<u>July</u>	<u>August</u>	<u>September</u>	<u>October</u>	<u>November</u>	<u>December</u>
Hour Corrections													
Number of hours with corrections	in the month	6	3	2	1	4	3	3	0	2	0	0	0
Number of hours	in the month	744	672	743	720	744	720	744	744	720	744	721	744
% of hours with corrections	in the month	0.81%	0.45%	0.27%	0.14%	0.54%	0.42%	0.40%	0.00%	0.28%	0.00%	0.00%	0.00%
% of hours with corrections	year-to-date	0.81%	0.64%	0.51%	0.42%	0.44%	0.44%	0.43%	0.38%	0.37%	0.33%	0.30%	0.27%
Interval Corrections													
Number of intervals corrected	in the month	13	4	2	1	22	17	4	0	3	0	0	0
Number of intervals	in the month	9,104	8,230	9,026	8,727	9,083	8,740	9,079	9,002	8,760	9,041	8,854	9,073
% of intervals corrected	in the month	0.14%	0.05%	0.02%	0.01%	0.24%	0.19%	0.04%	0.00%	0.03%	0.00%	0.00%	0.00%
% of intervals corrected	year-to-date	0.14%	0.10%	0.07%	0.06%	0.10%	0.11%	0.10%	0.09%	0.08%	0.07%	0.07%	0.06%
Hours Reserved													
Number of hours reserved	in the month	21	3	4	4	7	4	3	0	4	0	0	1
Number of hours	in the month	744	672	743	720	744	720	744	744	720	744	721	744
% of hours reserved	in the month	2.82%	0.45%	0.54%	0.56%	0.94%	0.56%	0.40%	0.00%	0.56%	0.00%	0.00%	0.13%
% of hours reserved	year-to-date	2.82%	1.69%	1.30%	1.11%	1.08%	0.99%	0.90%	0.79%	0.76%	0.69%	0.62%	0.58%
Days to Correction *													
Avg. number of days to correction	in the month	0.80	1.00	1.00	2.00	1.00	2.00	0.00	0.00	0.50	0.00	0.00	0.00
Avg. number of days to correction	year-to-date	0.80	0.88	0.90	1.00	1.00	1.07	0.94	0.94	0.89	0.89	0.89	0.89
Days Without Corrections													
Days without corrections	in the month	26	25	29	29	28	29	29	31	28	31	30	31
Days without corrections	year-to-date	26	51	80	109	137	166	195	226	254	285	315	346

* Calendar days from reservation date.

Percentage of Real-Time Corrections

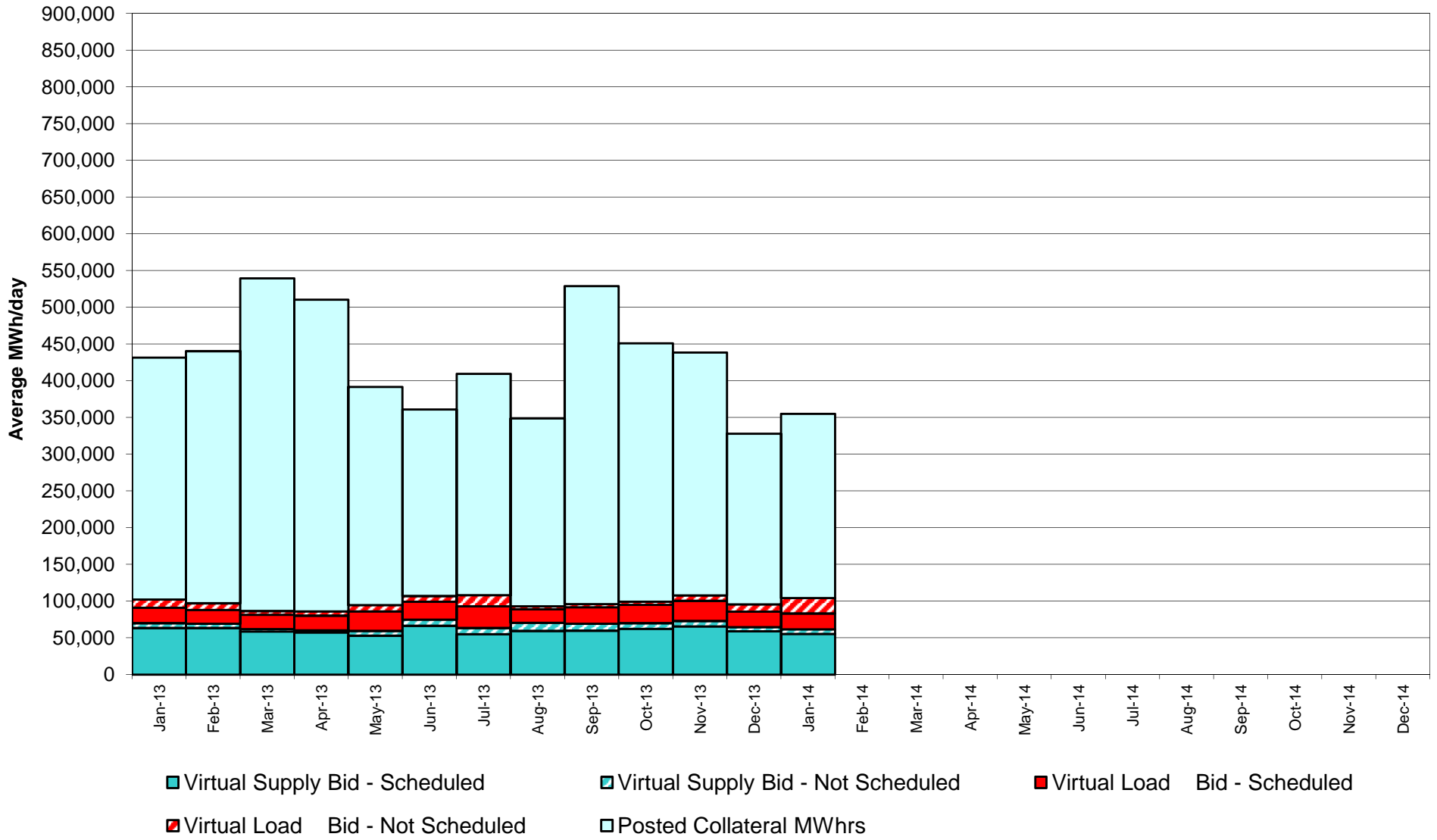


Annual average time period for making Price Corrections (from reservation date) *

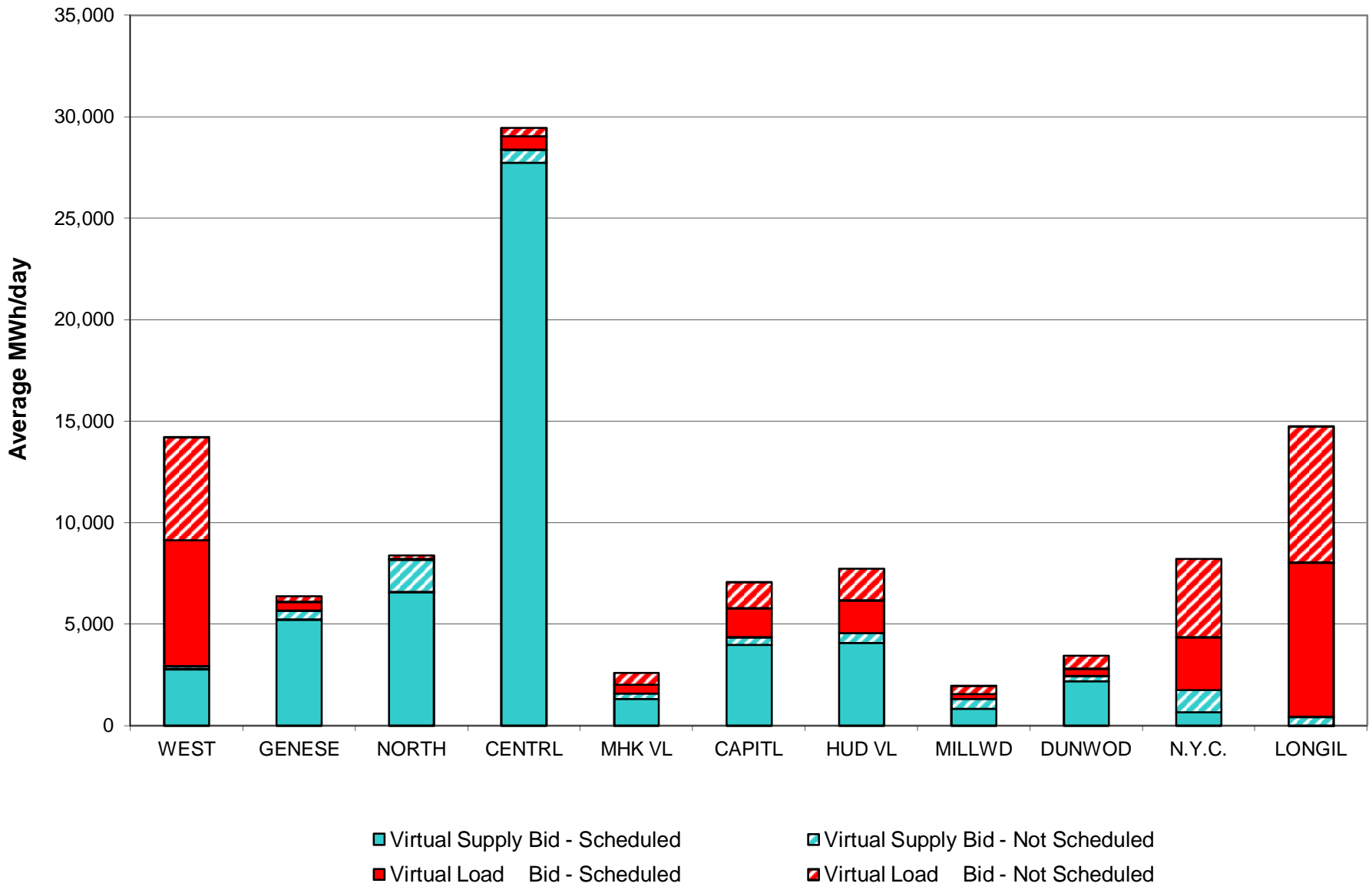


* Calendar days from reservation date.

NYISO Virtual Trading Average MWh per day



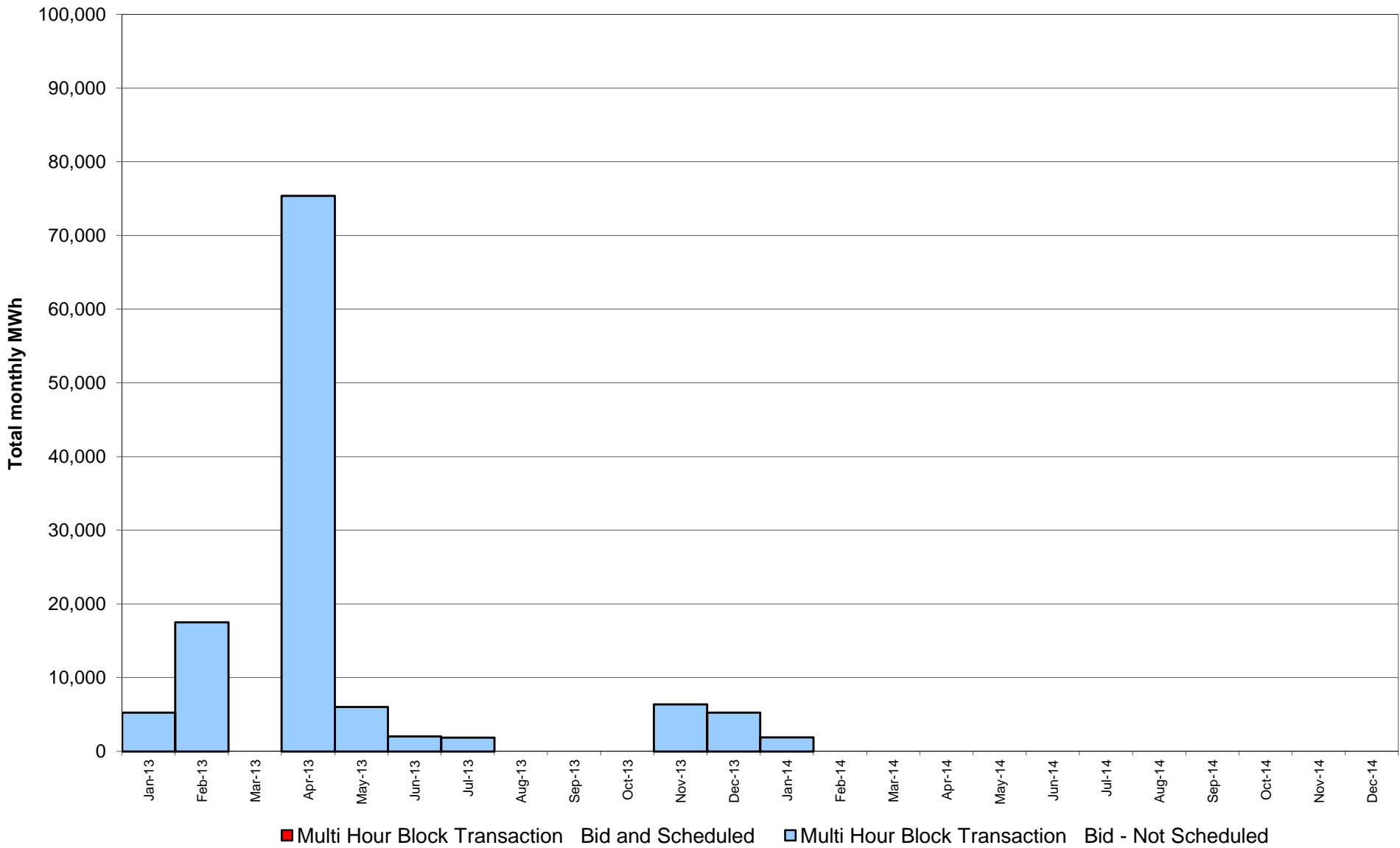
Virtual Load and Supply Zonal Statistics through January 31, 2014



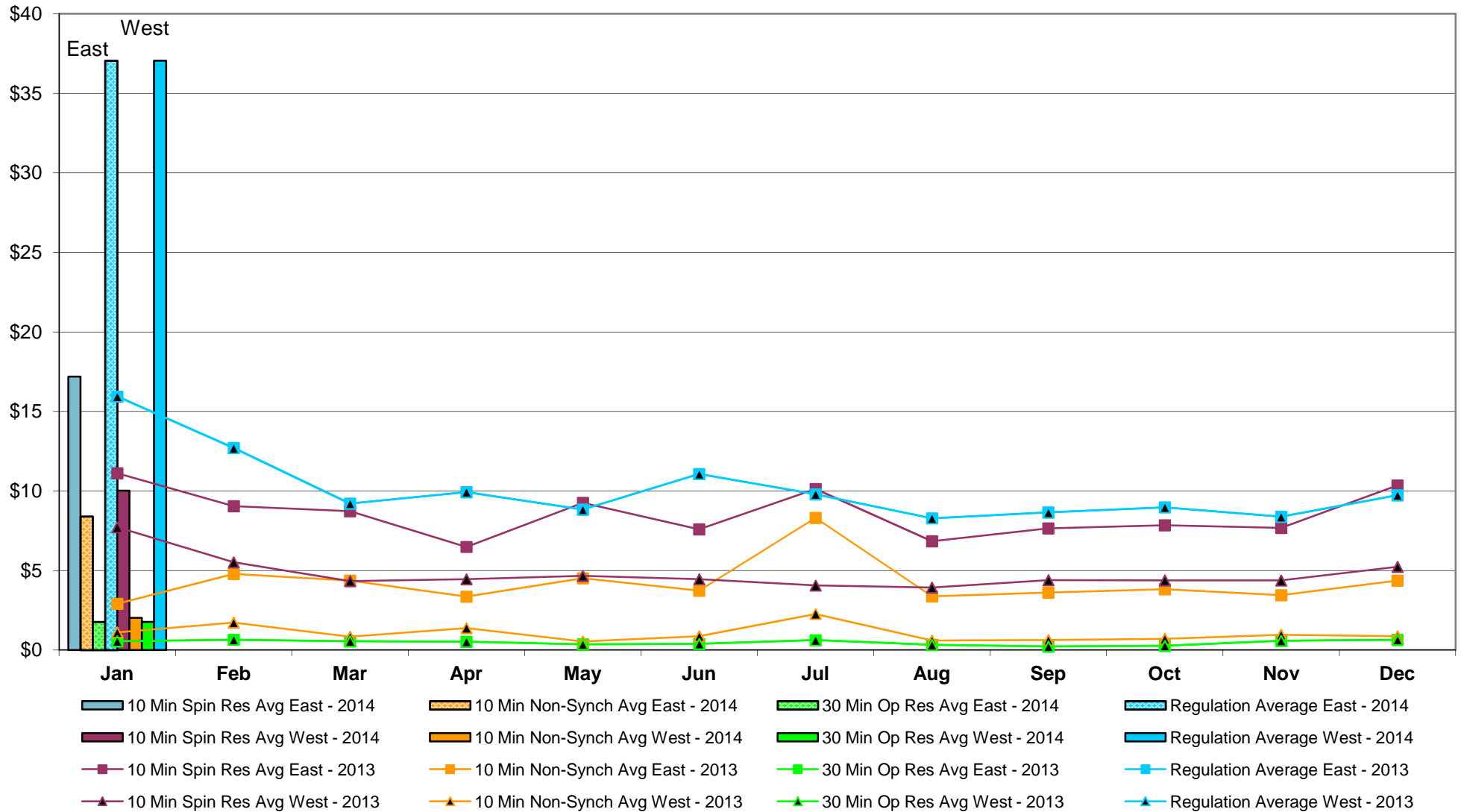
Virtual Load and Supply Zonal Statistics (Average MWh/day) - 2014

		Virtual Load Bid		Virtual Supply Bid				Virtual Load Bid		Virtual Supply Bid				Virtual Load Bid		Virtual Supply Bid	
Zone	Date	Scheduled	Not Scheduled	Scheduled	Not Scheduled	Zone	Date	Scheduled	Not Scheduled	Scheduled	Not Scheduled	Zone	Date	Scheduled	Not Scheduled	Scheduled	Not Scheduled
WEST	Jan-14	6,213	5,063	2,777	155	MHK VL	Jan-14	429	587	1316	260	DUNWOD	Jan-14	354	631	2182	268
	Feb-14						Feb-14						Feb-14				
	Mar-14						Mar-14						Mar-14				
	Apr-14						Apr-14						Apr-14				
	May-14						May-14						May-14				
	Jun-14						Jun-14						Jun-14				
	Jul-14						Jul-14						Jul-14				
	Aug-14						Aug-14						Aug-14				
	Sep-14						Sep-14						Sep-14				
	Oct-14						Oct-14						Oct-14				
	Nov-14						Nov-14						Nov-14				
	Dec-14						Dec-14						Dec-14				
GENESE	Jan-14	434	279	5,230	425	CAPITL	Jan-14	1439	1278	3985	379	N.Y.C.	Jan-14	2627	3843	666	1083
	Feb-14						Feb-14						Feb-14				
	Mar-14						Mar-14						Mar-14				
	Apr-14						Apr-14						Apr-14				
	May-14						May-14						May-14				
	Jun-14						Jun-14						Jun-14				
	Jul-14						Jul-14						Jul-14				
	Aug-14						Aug-14						Aug-14				
	Sep-14						Sep-14						Sep-14				
	Oct-14						Oct-14						Oct-14				
	Nov-14						Nov-14						Nov-14				
	Dec-14						Dec-14						Dec-14				
NORTH	Jan-14	47	168	6,579	1,592	HUD VL	Jan-14	1612	1554	4091	466	LONGIL	Jan-14	7605	6704	59	375
	Feb-14						Feb-14						Feb-14				
	Mar-14						Mar-14						Mar-14				
	Apr-14						Apr-14						Apr-14				
	May-14						May-14						May-14				
	Jun-14						Jun-14						Jun-14				
	Jul-14						Jul-14						Jul-14				
	Aug-14						Aug-14						Aug-14				
	Sep-14						Sep-14						Sep-14				
	Oct-14						Oct-14						Oct-14				
	Nov-14						Nov-14						Nov-14				
	Dec-14						Dec-14						Dec-14				
CENTRL	Jan-14	675	392	27,758	624	MILLWD	Jan-14	235	401	848	470	NYISO	Jan-14	21670	20900	55491	6098
	Feb-14						Feb-14						Feb-14				
	Mar-14						Mar-14						Mar-14				
	Apr-14						Apr-14						Apr-14				
	May-14						May-14						May-14				
	Jun-14						Jun-14						Jun-14				
	Jul-14						Jul-14						Jul-14				
	Aug-14						Aug-14						Aug-14				
	Sep-14						Sep-14						Sep-14				
	Oct-14						Oct-14						Oct-14				
	Nov-14						Nov-14						Nov-14				
	Dec-14						Dec-14						Dec-14				

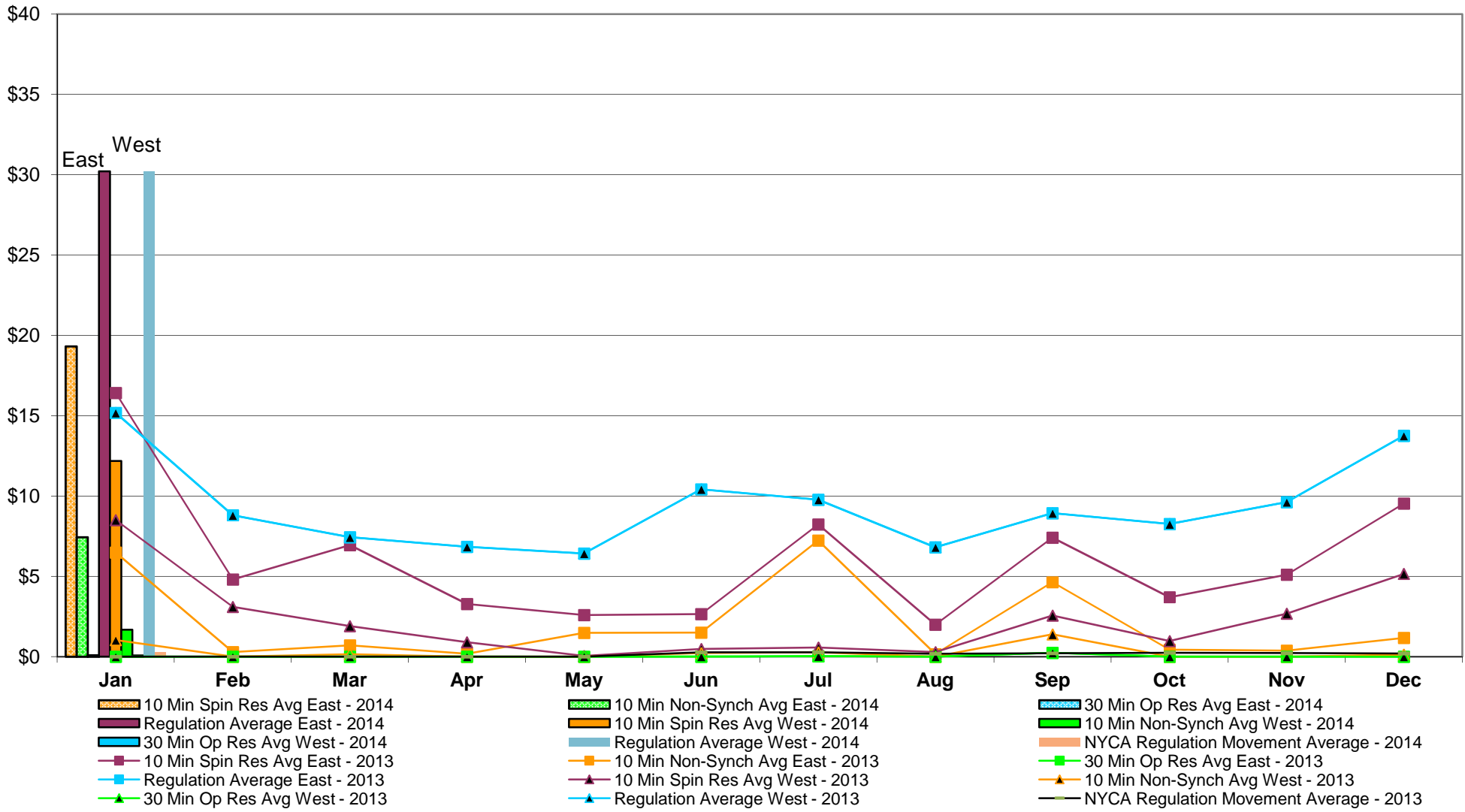
NYISO Multi Hour Block Transactions Monthly Total MWh



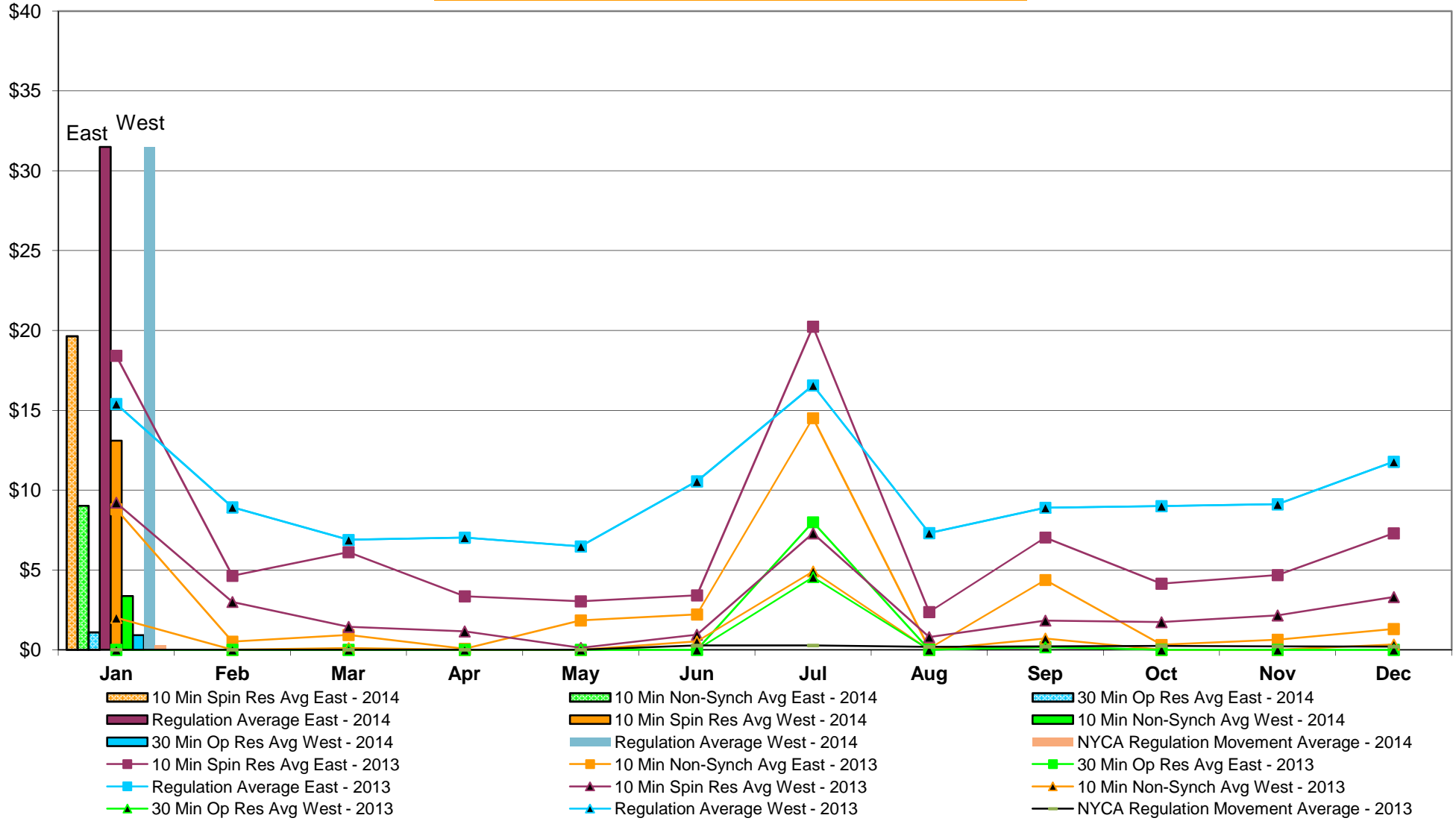
NYISO Monthly Average Ancillary Service Prices Day Ahead Market 2013 - 2014



NYISO Monthly Average Ancillary Service Prices RTC Market 2013 - 2014



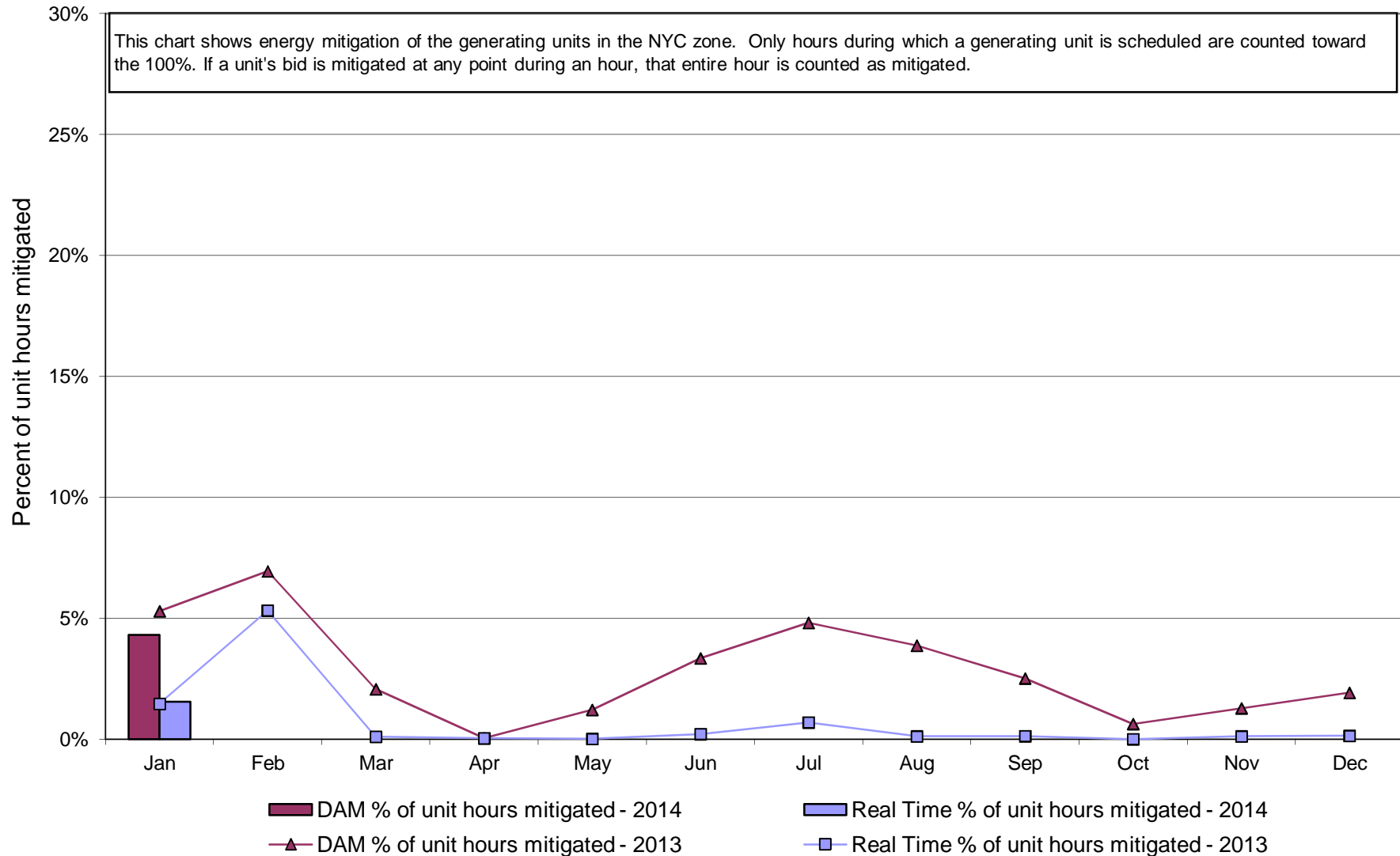
NYISO Monthly Average Ancillary Service Prices Real Time Market 2013 - 2014



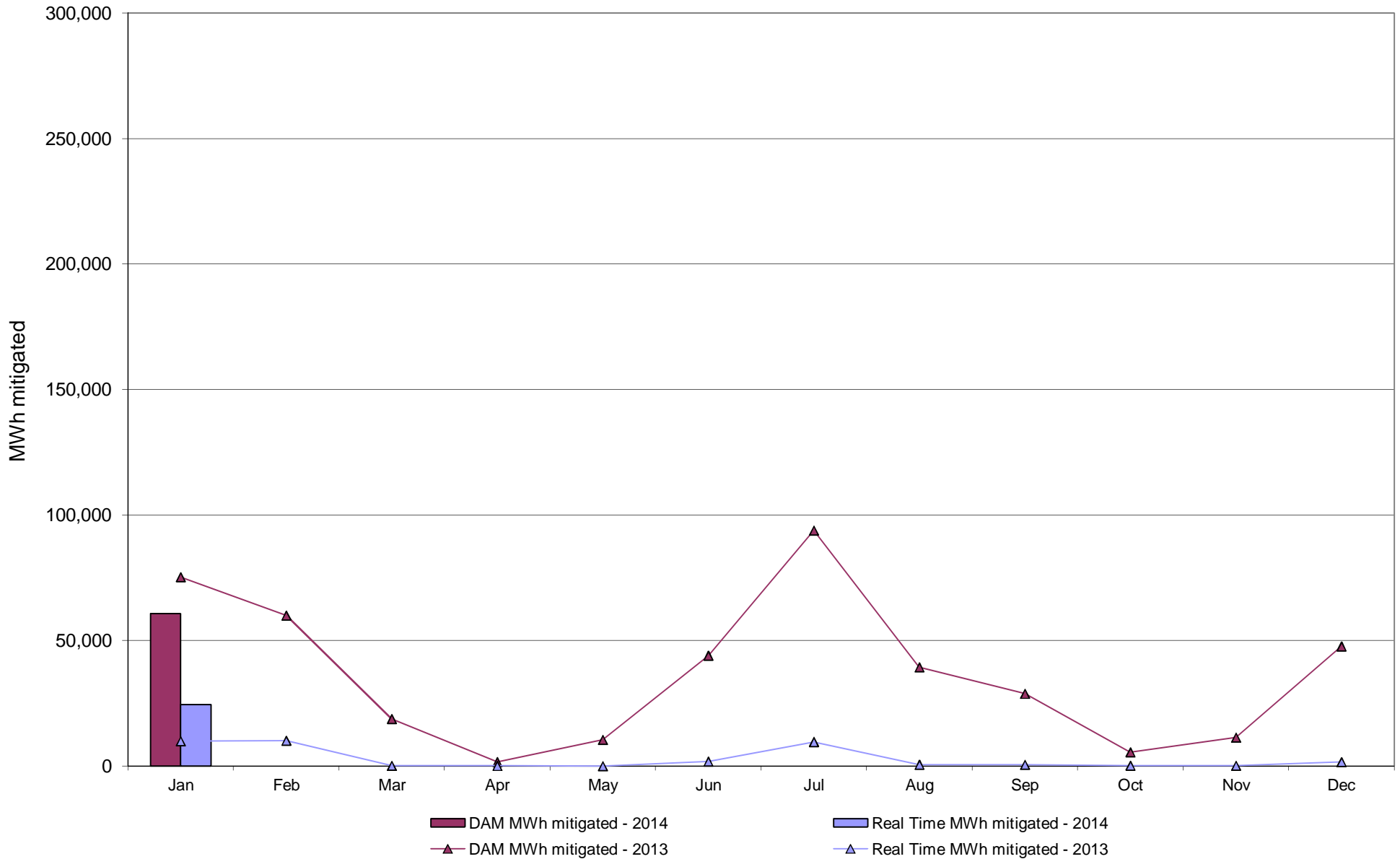
NYISO Markets Ancillary Services Statistics - Unweighted Price (\$/MWH)

2014	<u>January</u>	<u>February</u>	<u>March</u>	<u>April</u>	<u>May</u>	<u>June</u>	<u>July</u>	<u>August</u>	<u>September</u>	<u>October</u>	<u>November</u>	<u>December</u>
Day Ahead Market												
10 Min Spin East	17.19											
10 Min Spin West	10.02											
10 Min Non Synch East	8.40											
10 Min Non Synch West	2.02											
30 Min East	1.77											
30 Min West	1.77											
Regulation East	37.05											
Regulation West	37.05											
RTC Market												
10 Min Spin East	19.32											
10 Min Spin West	12.18											
10 Min Non Synch East	7.43											
10 Min Non Synch West	1.68											
30 Min East	0.08											
30 Min West	0.08											
Regulation East	30.21											
Regulation West	30.21											
NYCA Regulation Movement	0.28											
Real Time Market												
10 Min Spin East	19.64											
10 Min Spin West	13.10											
10 Min Non Synch East	9.03											
10 Min Non Synch West	3.37											
30 Min East	1.10											
30 Min West	0.92											
Regulation East	31.50											
Regulation West	31.50											
NYCA Regulation Movement	0.27											
2013	<u>January</u>	<u>February</u>	<u>March</u>	<u>April</u>	<u>May</u>	<u>June</u>	<u>July</u>	<u>August</u>	<u>September</u>	<u>October</u>	<u>November</u>	<u>December</u>
Day Ahead Market												
10 Min Spin East	11.12	9.05	8.73	6.49	9.25	7.59	10.13	6.84	7.65	7.85	7.68	10.35
10 Min Spin West	7.72	5.53	4.34	4.46	4.67	4.46	4.06	3.94	4.40	4.38	4.37	5.23
10 Min Non Synch East	2.91	4.79	4.36	3.36	4.52	3.73	8.31	3.37	3.62	3.82	3.45	4.37
10 Min Non Synch West	1.11	1.73	0.84	1.38	0.55	0.88	2.27	0.60	0.63	0.70	0.96	0.87
30 Min East	0.56	0.65	0.56	0.53	0.36	0.40	0.62	0.33	0.23	0.28	0.59	0.65
30 Min West	0.56	0.65	0.56	0.53	0.36	0.40	0.62	0.33	0.23	0.28	0.59	0.65
Regulation East	15.94	12.70	9.21	9.93	8.84	11.07	9.80	8.29	8.65	8.98	8.38	9.74
Regulation West	15.94	12.70	9.21	9.93	8.84	11.07	9.80	8.29	8.65	8.98	8.38	9.74
RTC Market												
10 Min Spin East	16.42	4.81	6.94	3.28	2.59	2.65	8.23	1.99	7.40	3.70	5.11	9.53
10 Min Spin West	8.50	3.10	1.90	0.90	0.05	0.48	0.57	0.29	2.56	0.97	2.68	5.16
10 Min Non Synch East	6.48	0.28	0.70	0.18	1.48	1.50	7.23	0.16	4.63	0.44	0.38	1.17
10 Min Non Synch West	1.04	0.00	0.15	0.00	0.00	0.22	0.26	0.00	1.39	0.00	0.00	0.13
30 Min East	0.00	0.00	0.00	0.00	0.00	0.00	0.03	0.00	0.24	0.00	0.00	0.00
30 Min West	0.00	0.00	0.00	0.00	0.00	0.00	0.03	0.00	0.24	0.00	0.00	0.00
Regulation East	15.18	8.81	7.43	6.84	6.42	10.42	9.77	6.81	8.93	8.26	9.63	13.75
Regulation West	15.18	8.81	7.43	6.84	6.42	10.42	9.77	6.81	8.93	8.26	9.63	13.75
NYCA Regulation Movement	0.00	0.00	0.00	0.00	0.00	0.27	0.28	0.18	0.21	0.24	0.22	0.20
Real Time Market												
10 Min Spin East	18.42	4.63	6.12	3.35	3.03	3.41	20.24	2.37	7.03	4.14	4.68	7.29
10 Min Spin West	9.22	3.00	1.44	1.15	0.13	0.94	7.29	0.80	1.83	1.73	2.16	3.31
10 Min Non Synch East	8.81	0.52	0.93	0.06	1.84	2.22	14.51	0.07	4.37	0.31	0.63	1.31
10 Min Non Synch West	2.00	0.00	0.10	0.00	0.00	0.53	4.91	0.00	0.70	0.00	0.00	0.34
30 Min East	0.00	0.00	0.00	0.00	0.00	0.00	7.99	0.00	0.17	0.00	0.00	0.00
30 Min West	0.00	0.00	0.00	0.00	0.00	0.00	4.55	0.00	0.17	0.00	0.00	0.00
Regulation East	15.40	8.92	6.89	7.03	6.48	10.55	16.57	7.32	8.90	9.00	9.12	11.78
Regulation West	15.40	8.92	6.89	7.03	6.48	10.55	16.57	7.32	8.90	9.00	9.12	11.78
NYCA Regulation Movement	0.00	0.00	0.00	0.00	0.00	0.27	0.27	0.19	0.21	0.24	0.22	0.20

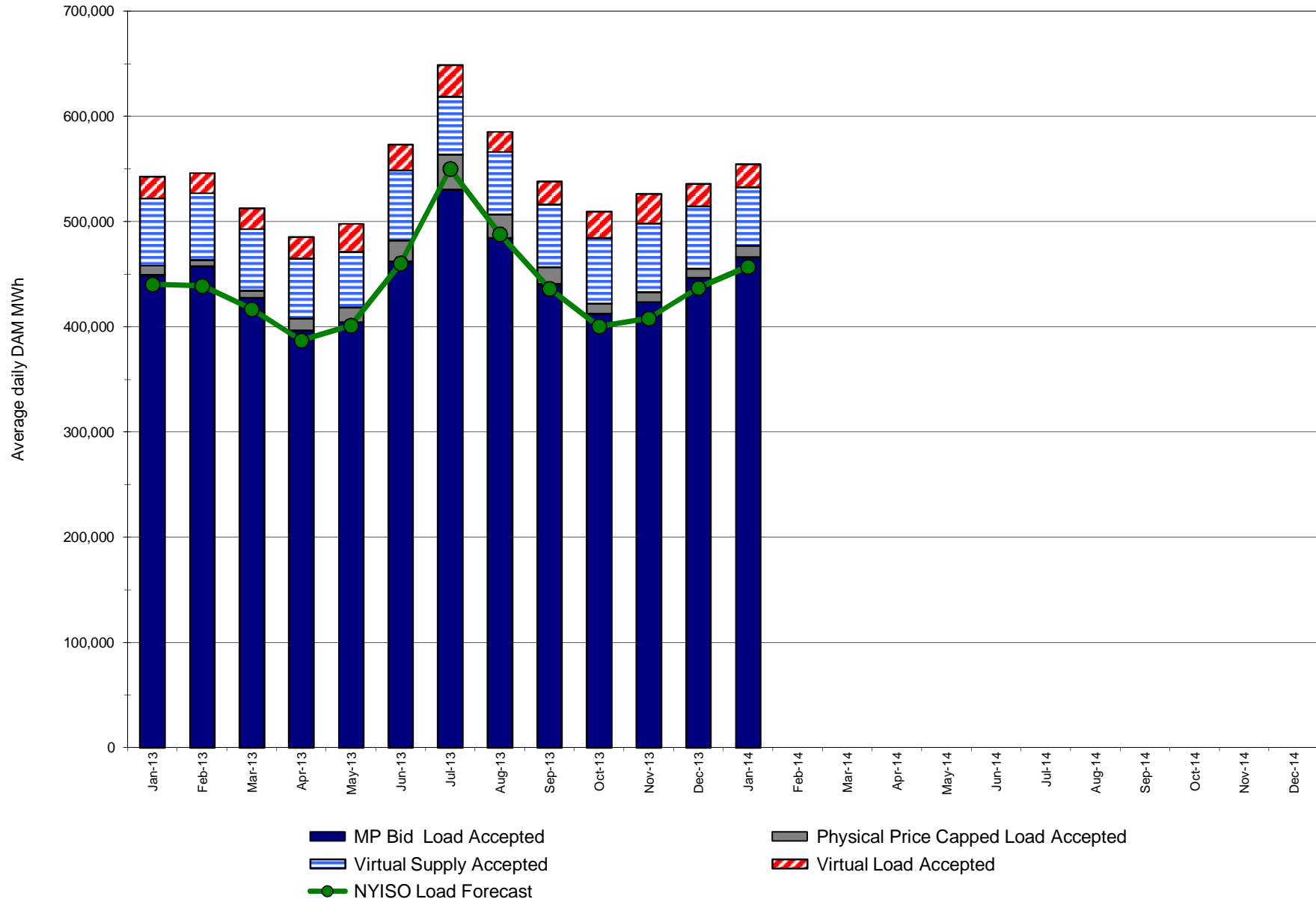
NYISO In City Energy Mitigation - AMP (NYC Zone) 2013 - 2014 Percentage of committed unit-hours mitigated



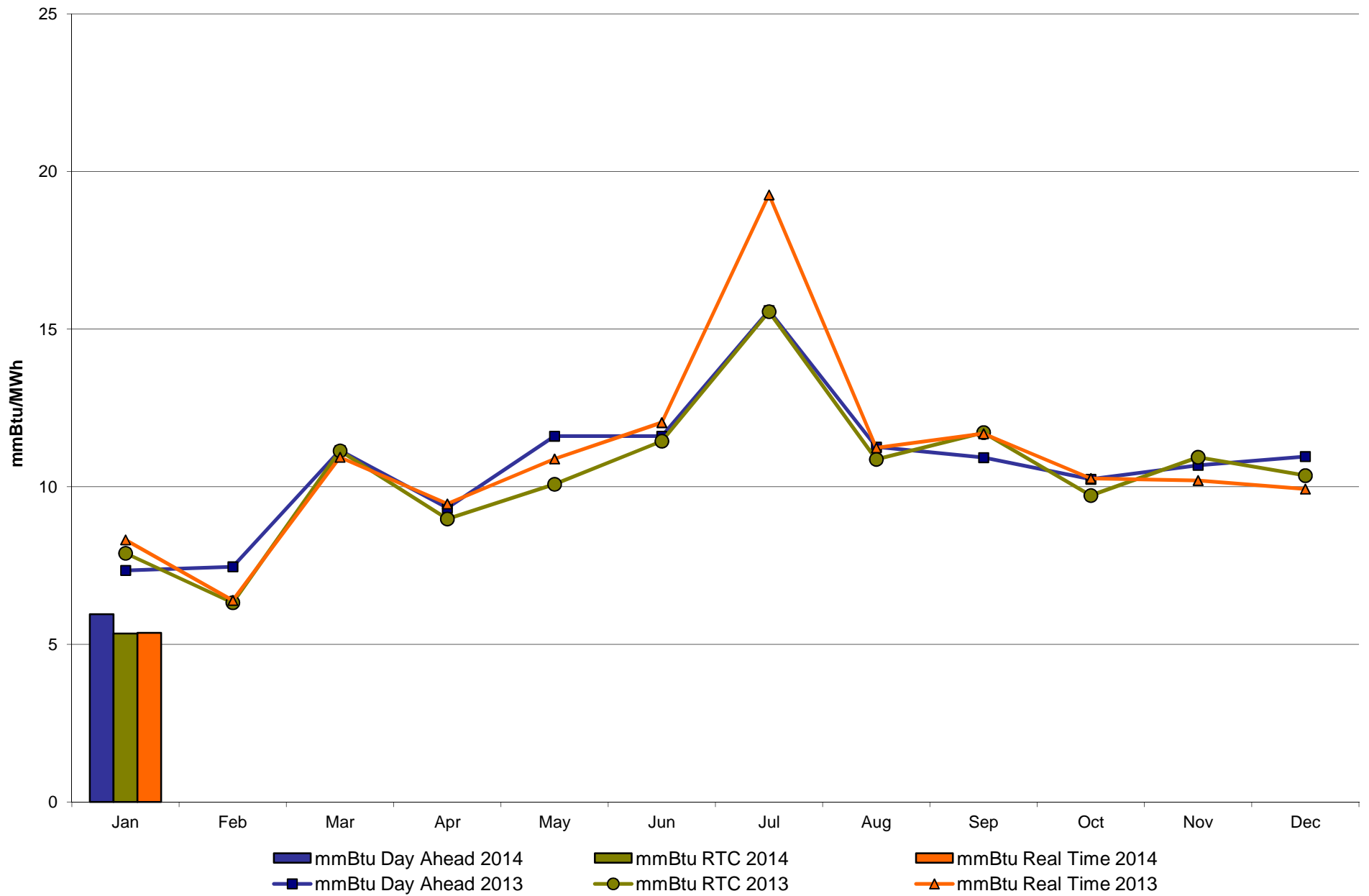
**NYISO In City Energy Mitigation (NYC Zone) 2013 - 2014
Monthly megawatt hours mitigated**



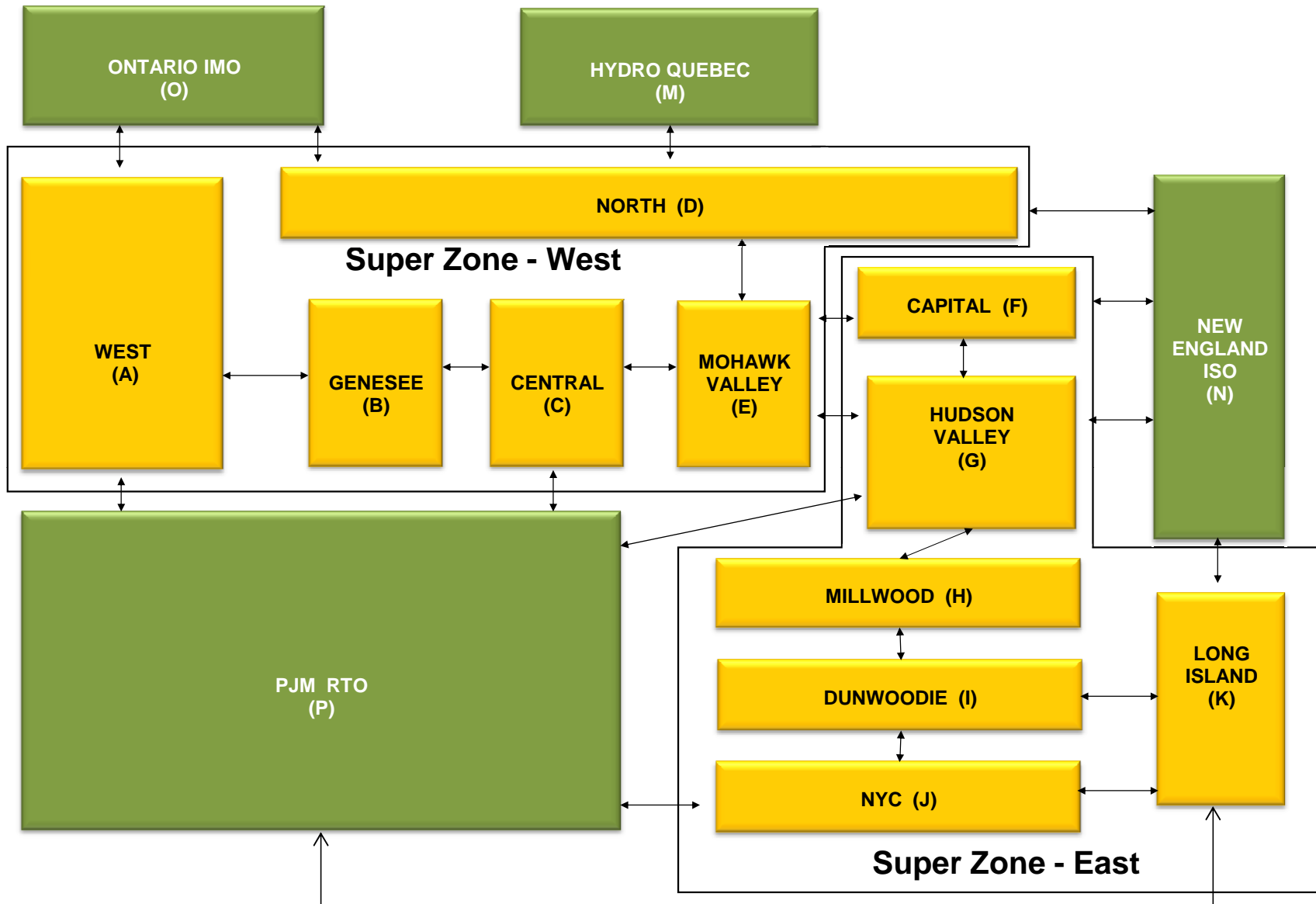
NYISO Average Daily DAM Load Bid Summary



Monthly Implied Heat Rate 2013-2014



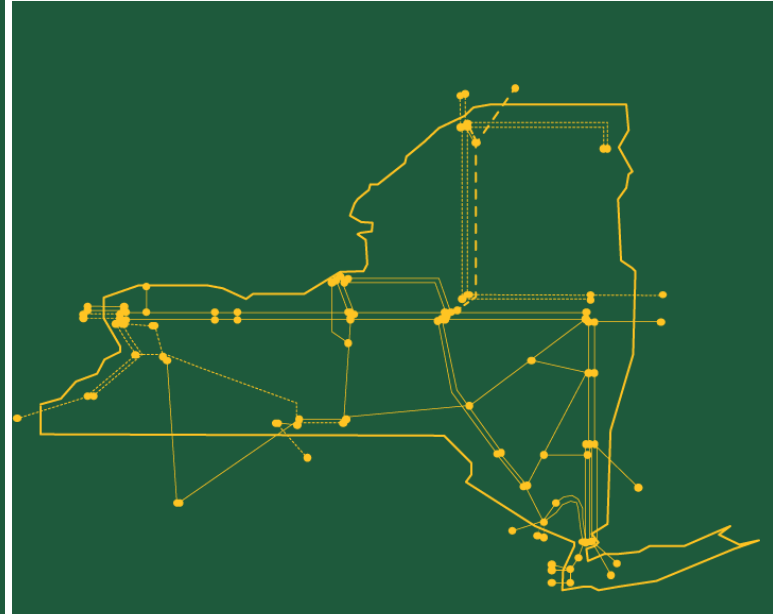
NYISO LBMP ZONES



Billing Codes for Chart 4-C

Chart - C Category Name	Billing Code	Billing Category Name
Bid Production Cost Guarantee Balancing	81203	Balancing NYISO Bid Production Cost Guarantee - Internal Units
Bid Production Cost Guarantee Balancing	81204	Balancing NYISO Bid Production Cost Guarantee - External Units
Bid Production Cost Guarantee Balancing	81205	Balancing NYISO Bid Production Cost Guarantee Expenditure due to Curtailed Imports
Bid Production Cost Guarantee Balancing	81208	Balancing NYISO Bid Production Cost Guarantee - Internal Units
Bid Production Cost Guarantee Balancing	81209	Balancing NYISO Bid Production Cost Guarantee - External Units
Bid Production Cost Guarantee Balancing	81213	Balancing NYISO Bid Production Cost Guarantee Expenditure due to Curtailed Imports
Bid Production Cost Guarantee DAM	81201	DAM NYISO Bid Production Cost Guarantee - Internal Units
Bid Production Cost Guarantee DAM	84001	EDRP/SCR Demand Response - Local
Bid Production Cost Guarantee DAM	84101	EDRP/SCR Demand Response - NYISO Wide
Bid Production Cost Guarantee DAM	81401	DAM Price Responsive Load Program
Bid Production Cost Guarantee DAM	81202	DAM NYISO Bid Production Cost Guarantee - External Units
Bid Production Cost Guarantee DAM	81206	DAM NYISO Bid Production Cost Guarantee - Internal Units
Bid Production Cost Guarantee DAM	81207	DAM NYISO Bid Production Cost Guarantee - External Units
Bid Production Cost Guarantee DAM Virtual	81501	DAM Virtual Bid Production Cost Guarantee
DAM Contract Balancing	81315	DAM Contract Balancing
DAM Contract Balancing	81317	DAM Contract Balancing
Local Reliability Balancing	81002	Balancing Local Reliability Bid Production Cost Guarantee
Local Reliability Balancing	83901	Margin Restoration (MOB) Revenue
Local Reliability DAM	81001	DAM Local Reliability Bid Production Cost Guarantee
NYISO Cost of Operations	80901	NYISO Cost Of Operations
NYISO Cost of Operations	80902	NYISO Cost Of Operations
NYISO Cost of Operations	83501	NYISO Cost Of Operations
NYISO Cost of Operations	83502	NYISO Cost Of Operations
Residuals Balancing	81302	Balancing Market Energy Residual
Residuals Balancing	81304	Balancing Market Loss Residual
Residuals Balancing	81305	Balancing Market Congestion Balancing
Residuals Balancing	81306	Emergency Energy Purchases
Residuals Balancing	81307	Emergency Energy Sales
Residuals Balancing	81309	Balancing Market Energy Residual
Residuals Balancing	81311	Balancing Market Loss Residual
Residuals Balancing	81312	Balancing Market Congestion Balancing
Residuals Balancing	81313	Emergency Energy Purchases
Residuals Balancing	81314	Emergency Energy Sales
Residuals DAM	81301	Day Ahead Market Energy Residual
Residuals DAM	81303	Day Ahead Market Loss Residual
Residuals DAM	81308	Day Ahead Market Energy Residual
Residuals DAM	81310	Day Ahead Market Loss Residual

The New York Independent System Operator (NYISO) is a not-for-profit corporation responsible for operating the state's bulk electricity grid, administering New York's competitive wholesale electricity markets, conducting comprehensive long-term planning for the state's electric power system, and advancing the technological infrastructure of the electric system serving the Empire State.



www.nyiso.com